

Product datasheet for **TA345967**

RAD51AP1 Rabbit Polyclonal Antibody

Product data:

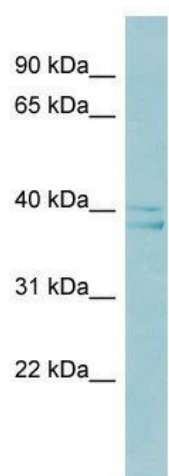
Product Type:	Primary Antibodies
Applications:	WB
Recommended Dilution:	WB
Reactivity:	Human
Host:	Rabbit
Isotype:	IgG
Clonality:	Polyclonal
Immunogen:	The immunogen for anti-RAD51AP1 antibody: synthetic peptide directed towards the middle region of human RAD51AP1. Synthetic peptide located within the following region: IKKKEVKVKSPVEKKEKSKSKCNALVTSVDSAPAAVKSESQSLPKKVSL
Formulation:	Liquid. Purified antibody supplied in 1x PBS buffer with 0.09% (w/v) sodium azide and 2% sucrose. <i>Note that this product is shipped as lyophilized powder to China customers.</i>
Purification:	Affinity Purified
Conjugation:	Unconjugated
Storage:	Store at -20°C as received.
Stability:	Stable for 12 months from date of receipt.
Predicted Protein Size:	37 kDa
Gene Name:	RAD51 associated protein 1
Database Link:	NP_006470 Entrez Gene 10635 Human Q96B01
Background:	RAD51AP1 may participate in a common DNA damage response pathway associated with the activation of homologous recombination and double-strand break repair. RAD51AP1 binds to single and double stranded DNA, and is capable of aggregating DNA. RAD51AP1 also
Synonyms:	PIR51
Note:	Immunogen Sequence Homology: Rat: 100%; Human: 100%; Rabbit: 100%; Pig: 93%; Yeast: 91%; Dog: 86%; Horse: 85%



[View online »](#)

Protein Families: Druggable Genome

Product images:



WB Suggested Anti-RAD51AP1 Antibody Titration:
0.2-1 ug/ml; ELISA Titer: 1: 62500; Positive
Control: HT1080 cell lysate