

## Product datasheet for **TA345964**

### PRPF8 Rabbit Polyclonal Antibody

#### Product data:

Product Type:	Primary Antibodies
Applications:	WB
Recommended Dilution:	WB
Reactivity:	Human
Host:	Rabbit
Isotype:	IgG
Clonality:	Polyclonal
Immunogen:	The immunogen for anti-PRPF8 antibody: synthetic peptide directed towards the N terminal of human PRPF8. Synthetic peptide located within the following region: SHRHSVKSQEPLPDDDEEFELPEFVEPFLKDTPLYTDNTANGIALLWAPR
Formulation:	Liquid. Purified antibody supplied in 1x PBS buffer with 0.09% (w/v) sodium azide and 2% sucrose. <i>Note that this product is shipped as lyophilized powder to China customers.</i>
Purification:	Affinity Purified
Conjugation:	Unconjugated
Storage:	Store at -20°C as received.
Stability:	Stable for 12 months from date of receipt.
Predicted Protein Size:	273 kDa
Gene Name:	pre-mRNA processing factor 8
Database Link:	<a href="#">NP_006436</a> <a href="#">Entrez Gene 10594 Human</a> <a href="#">Q6P2Q9</a>



[View online »](#)

**Background:**

Pre-mRNA splicing occurs in 2 sequential transesterification steps. PRPF8 is a component of both U2- and U12-dependent spliceosomes, and found to be essential for the catalytic step II in pre-mRNA splicing process. It contains several WD repeats, which function in protein-protein interactions. This protein has a sequence similarity to yeast Prp8 protein. The gene encoding PRPF8 is a candidate gene for autosomal dominant retinitis pigmentosa. Pre-mRNA splicing occurs in 2 sequential transesterification steps. The protein encoded by this gene is a component of both U2- and U12-dependent spliceosomes, and found to be essential for the catalytic step II in pre-mRNA splicing process. It contains several WD repeats, which function in protein-protein interactions. This protein has a sequence similarity to yeast Prp8 protein. This gene is a candidate gene for autosomal dominant retinitis pigmentosa. Publication Note: This RefSeq record includes a subset of the publications that are available for this gene. Please see the Entrez Gene record to access additional publications.

**Synonyms:**

HPRP8; PRP8; PRPC8; RP13; SNRNP220

**Note:**

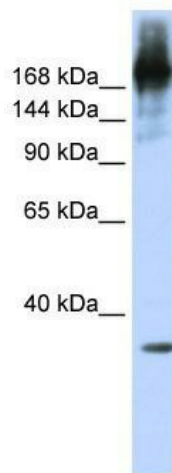
Immunogen Sequence Homology: Dog: 100%; Pig: 100%; Rat: 100%; Horse: 100%; Human: 100%; Mouse: 100%; Bovine: 100%; Rabbit: 100%; Zebrafish: 100%; Guinea pig: 100%

**Protein Families:**

Druggable Genome

**Protein Pathways:**

Spliceosome

**Product images:**

WB Suggested Anti-PRPF8 Antibody Titration: 0.2-1 ug/ml; ELISA Titer: 1: 312500; Positive Control: Jurkat cell lysate PRPF8 is supported by BioGPS gene expression data to be expressed in Jurkat