

## Product datasheet for **TA345962**

### Ribonuclease H2, subunit A (RNASEH2A) Rabbit Polyclonal Antibody

#### Product data:

Product Type:	Primary Antibodies
Applications:	IHC, WB
Recommended Dilution:	WB, IHC
Reactivity:	Human
Host:	Rabbit
Isotype:	IgG
Clonality:	Polyclonal
Immunogen:	The immunogen for anti-RNASEH2A antibody: synthetic peptide directed towards the C terminal of human RNASEH2A. Synthetic peptide located within the following region: EKEAEDVIWEDSASENQEGLRKITSYFLNEGSQARPRSSHRYFLERGLS
Formulation:	Liquid. Purified antibody supplied in 1x PBS buffer with 0.09% (w/v) sodium azide and 2% sucrose. <i>Note that this product is shipped as lyophilized powder to China customers.</i>
Purification:	Affinity Purified
Conjugation:	Unconjugated
Storage:	Store at -20°C as received.
Stability:	Stable for 12 months from date of receipt.
Predicted Protein Size:	33 kDa
Gene Name:	ribonuclease H2 subunit A
Database Link:	<a href="#">NP_006388</a> <a href="#">Entrez Gene 10535 Human O75792</a>



[View online »](#)

**Background:**

Of the multiple RNases H in mammals, RNase HI is the major enzyme and shows increased activity during DNA replication. It shows more homology to the RNase HII of Escherichia coli. Of the multiple RNases H in mammals, RNase HI is the major enzyme and shows increased activity during DNA replication. It shows more homology to the RNase HII of Escherichia coli. Of the multiple RNases H in mammals, RNase HI is the major enzyme and shows increased activity during DNA replication. It shows more homology to the RNase HII of Escherichia coli.

**Synonyms:**

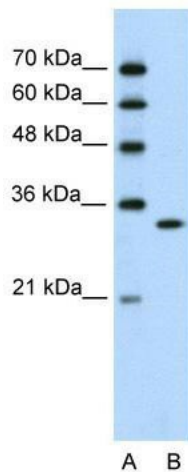
AGS4; JUNB; RNASEHI; RNHIA; RNHL

**Note:**

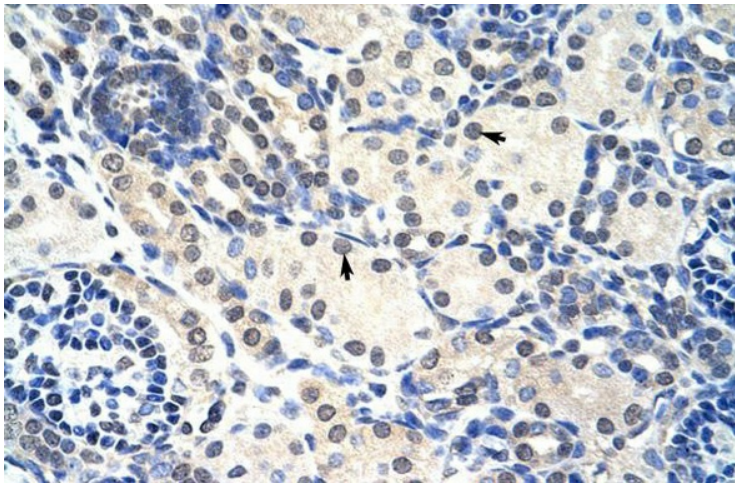
Immunogen Sequence Homology: Human: 100%

**Protein Pathways:**

DNA replication

**Product images:**


WB Suggested Anti-RNASEH2A Antibody Titration: 0.2-1 ug/ml; Positive Control: Jurkat cell lysate RNASEH2A is supported by BioGPS gene expression data to be expressed in Jurkat



Rabbit Anti-RNASEH2A Antibody; Paraffin Embedded Tissue: Human Kidney; Cellular Data: Epithelial cells of renal tubule; Antibody Concentration: 4.0-8.0 ug/ml; Magnification: 400X