

## Product datasheet for **TA345959**

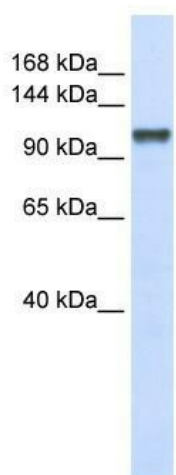
### CHERP Rabbit Polyclonal Antibody

#### Product data:

Product Type:	Primary Antibodies
Applications:	WB
Recommended Dilution:	WB
Reactivity:	Human
Host:	Rabbit
Isotype:	IgG
Clonality:	Polyclonal
Immunogen:	The immunogen for anti-CHERP antibody: synthetic peptide directed towards the middle region of human CHERP. Synthetic peptide located within the following region: EQGIQDPIKGGDVRDKWDQYKGVGVALDDPYENYRRNKSYFARMKARD
Formulation:	Liquid. Purified antibody supplied in 1x PBS buffer with 0.09% (w/v) sodium azide and 2% sucrose. <i>Note that this product is shipped as lyophilized powder to China customers.</i>
Purification:	Affinity Purified
Conjugation:	Unconjugated
Storage:	Store at -20°C as received.
Stability:	Stable for 12 months from date of receipt.
Predicted Protein Size:	104 kDa
Gene Name:	calcium homeostasis endoplasmic reticulum protein
Database Link:	<a href="#">NP_006378</a> <a href="#">Entrez Gene 10523 Human</a> <a href="#">Q8IWX8</a>
Background:	CHERP is involved in calcium homeostasis, growth and proliferation.
Synonyms:	DAN16; SCAF6; SRA1
Note:	Immunogen Sequence Homology: Dog: 100%; Pig: 100%; Rat: 100%; Horse: 100%; Human: 100%; Mouse: 100%; Bovine: 100%; Guinea pig: 100%; Zebrafish: 92%
Protein Pathways:	Spliceosome



[View online »](#)

**Product images:**

WB Suggested Anti-CHERP Antibody Titration:  
0.2-1 ug/ml; ELISA Titer: 1: 62500; Positive  
Control: 293T cell lysate  
CHERP is supported by  
BioGPS gene expression data to be expressed in  
HEK293T