

## Product datasheet for **TA345953**

### EMG1 Rabbit Polyclonal Antibody

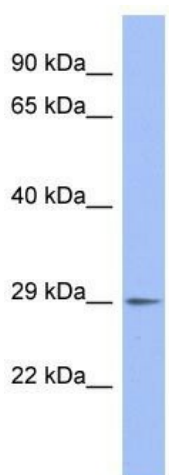
#### Product data:

Product Type:	Primary Antibodies
Applications:	WB
Recommended Dilution:	WB
Reactivity:	Human
Host:	Rabbit
Isotype:	IgG
Clonality:	Polyclonal
Immunogen:	The immunogen for Anti-EMG1 antibody is: synthetic peptide directed towards the C-terminal region of Human EMG1. Synthetic peptide located within the following region: VSDVRELVPSDDPIVFWGAFAHGKVSVEYTEKMVSISNYPLSAALCAK
Formulation:	Liquid. Purified antibody supplied in 1x PBS buffer with 0.09% (w/v) sodium azide and 2% sucrose. <i>Note that this product is shipped as lyophilized powder to China customers.</i>
Purification:	Affinity Purified
Conjugation:	Unconjugated
Storage:	Store at -20°C as received.
Stability:	Stable for 12 months from date of receipt.
Predicted Protein Size:	26 kDa
Gene Name:	EMG1, N1-specific pseudouridine methyltransferase
Database Link:	<a href="#">NP_006322</a> <a href="#">Entrez Gene 10436 Human Q92979</a>
Background:	EMG1 involved in 40S ribosomal subunit biogenesis. It seems to play a role a methylation reaction in pre-rRNA processing.
Synonyms:	C2F; Grcc2f; NEP1
Note:	Immunogen Sequence Homology: Pig: 100%; Rat: 100%; Horse: 100%; Human: 100%; Mouse: 100%; Rabbit: 100%; Guinea pig: 100%; Dog: 93%; Bovine: 93%; Zebrafish: 79%



[View online »](#)

## Product images:



Host: Rabbit  
Target Name: EMG1  
Sample Tissue: THP-1 Cell Lysate  
Antibody Dilution: 1.0 $\mu$ g/ml

Host: Rabbit; Target Name: EMG1; Sample Tissue:  
THP-1 Whole Cell lysates; Antibody Dilution: 1.0  
ug/ml