

## Product datasheet for **TA345952**

### EMG1 Rabbit Polyclonal Antibody

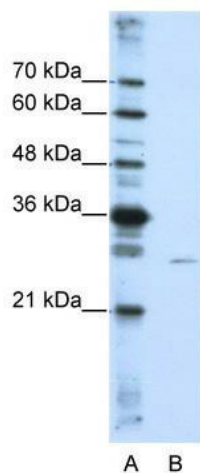
#### Product data:

Product Type:	Primary Antibodies
Applications:	IHC, WB
Recommended Dilution:	WB, IHC
Reactivity:	Human
Host:	Rabbit
Isotype:	IgG
Clonality:	Polyclonal
Immunogen:	The immunogen for anti-EMG1 antibody: synthetic peptide directed towards the N terminal of human EMG1. Synthetic peptide located within the following region: SLETVKVGKTYELLNCDKHKHSILLKNGRDPGEARPDITHQSLLMLMDSPL
Formulation:	Liquid. Purified antibody supplied in 1x PBS buffer with 0.09% (w/v) sodium azide and 2% sucrose. <i>Note that this product is shipped as lyophilized powder to China customers.</i>
Purification:	Affinity Purified
Conjugation:	Unconjugated
Storage:	Store at -20°C as received.
Stability:	Stable for 12 months from date of receipt.
Predicted Protein Size:	27 kDa
Gene Name:	EMG1, N1-specific pseudouridine methyltransferase
Database Link:	<a href="#">NP_006322</a> <a href="#">Entrez Gene 10436 Human Q92979</a>
Background:	EMG1 involved in 40S ribosomal subunit biogenesis. It seems to play a role a methylation reaction in pre-rRNA processing.
Synonyms:	C2F; Grcc2f; NEP1
Note:	Immunogen Sequence Homology: Human: 100%; Rat: 93%; Mouse: 93%; Dog: 92%; Pig: 92%; Horse: 92%; Bovine: 92%; Rabbit: 92%; Guinea pig: 92%; Zebrafish: 79%

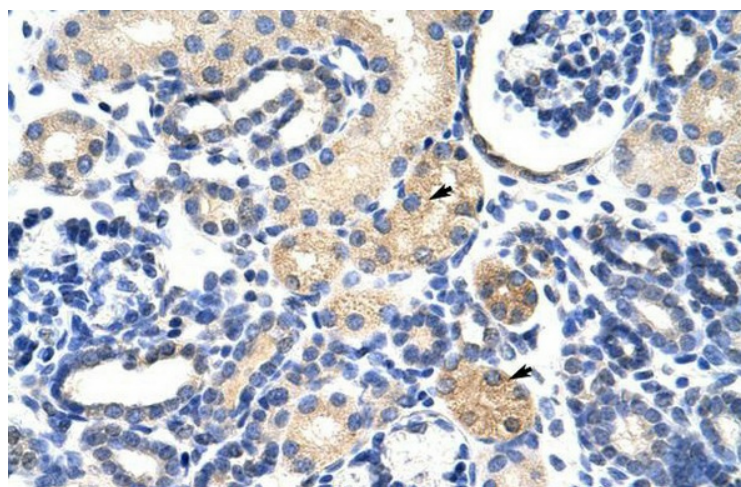


[View online »](#)

**Product images:**



WB Suggested Anti-EMG1 Antibody Titration: 0.2-1 ug/ml; Positive Control: HepG2 cell lysate. EMG1 is supported by BioGPS gene expression data to be expressed in HepG2



Rabbit Anti-EMG1 Antibody; Paraffin Embedded Tissue: Human Kidney; Cellular Data: Epithelial cells of renal tubule; Antibody Concentration: 4.0-8.0 ug/ml; Magnification: 400X