

Product datasheet for **TA345951**

RBM14 Rabbit Polyclonal Antibody

Product data:

Product Type:	Primary Antibodies
Applications:	WB
Recommended Dilution:	WB
Reactivity:	Human
Host:	Rabbit
Isotype:	IgG
Clonality:	Polyclonal
Immunogen:	The immunogen for anti-RBM14 antibody: synthetic peptide directed towards the N terminal of human RBM14. Synthetic peptide located within the following region: YAFVHMEKEADAKAAIAQLNGKEVKGKRINVELSTKGQKKGPGLAVQSGD
Formulation:	Liquid. Purified antibody supplied in 1x PBS buffer with 0.09% (w/v) sodium azide and 2% sucrose. <i>Note that this product is shipped as lyophilized powder to China customers.</i>
Purification:	Affinity Purified
Conjugation:	Unconjugated
Storage:	Store at -20°C as received.
Stability:	Stable for 12 months from date of receipt.
Predicted Protein Size:	69 kDa
Gene Name:	RNA binding motif protein 14
Database Link:	NP_006319 Entrez Gene 10432 Human Q96PK6
Background:	RBM14 contains 2 RRM (RNA recognition motif) domains. Isoform 1 may function as a nuclear receptor coactivator, enhancing transcription through other coactivators such as NCOA6 and CITED1. Isoform 2, functions as a transcriptional repressor, modulating transcriptional activities of coactivators including isoform 1, NCOA6 and CITED1.
Synonyms:	COAA; PSP2; SIP; SYTIP1; TMEM137

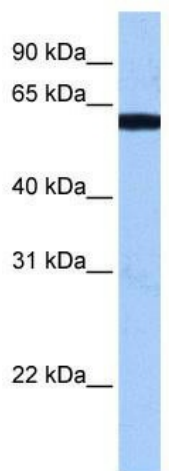


[View online »](#)

Note: Immunogen Sequence Homology: Dog: 100%; Pig: 100%; Rat: 100%; Human: 100%; Mouse: 100%; Bovine: 100%; Rabbit: 100%; Guinea pig: 100%

Protein Families: Druggable Genome, Stem cell - Pluripotency, Transcription Factors

Product images:



WB Suggested Anti-RBM14 Antibody Titration:
0.2-1 ug/ml; Positive Control: Human brain