

Product datasheet for **TA345947**

Cyclophilin E (PPIE) Rabbit Polyclonal Antibody

Product data:

| | |
|-------------------------|--|
| Product Type: | Primary Antibodies |
| Applications: | IHC, WB |
| Recommended Dilution: | WB, IHC |
| Reactivity: | Human |
| Host: | Rabbit |
| Isotype: | IgG |
| Clonality: | Polyclonal |
| Immunogen: | The immunogen for anti-PPIE antibody: synthetic peptide directed towards the middle region of human PPIE. Synthetic peptide located within the following region: KKFSGKTLLEENKEEEEGSEPPKAETQEGEPIAKKARSNPQVYMDIKIGNKP |
| Formulation: | Liquid. Purified antibody supplied in 1x PBS buffer with 0.09% (w/v) sodium azide and 2% sucrose. <i>Note that this product is shipped as lyophilized powder to China customers.</i> |
| Purification: | Protein A purified |
| Conjugation: | Unconjugated |
| Storage: | Store at -20°C as received. |
| Stability: | Stable for 12 months from date of receipt. |
| Predicted Protein Size: | 33 kDa |
| Gene Name: | peptidylprolyl isomerase E |
| Database Link: | NP_006103 Entrez Gene 10450 Human Q9UNP9 |



[View online »](#)

Background:

PPIE is a member of the peptidyl-prolyl cis-trans isomerase (PPIase) family. PPIases catalyze the cis-trans isomerization of proline imidic peptide bonds in oligopeptides and accelerate the folding of proteins. This protein contains a highly conserved cyclophilin (CYP) domain as well as an RNA-binding domain. It was shown to possess PPIase and protein folding activities and also exhibit RNA-binding activity. Three alternatively spliced transcript variants encoding distinct isoforms have been observed. The protein encoded by this gene is a member of the peptidyl-prolyl cis-trans isomerase (PPIase) family. PPIases catalyze the cis-trans isomerization of proline imidic peptide bonds in oligopeptides and accelerate the folding of proteins. This protein contains a highly conserved cyclophilin (CYP) domain as well as an RNA-binding domain. It was shown to possess PPIase and protein folding activities and also exhibit RNA-binding activity. Three alternatively spliced transcript variants encoding distinct isoforms have been observed.

Synonyms:

CYP-33; CYP33

Note:

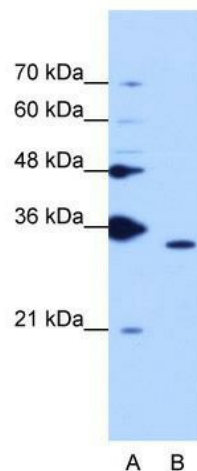
Immunogen Sequence Homology: Dog: 100%; Pig: 100%; Horse: 100%; Human: 100%; Sheep: 100%; Yeast: 100%; Bovine: 100%; Rabbit: 100%; Rat: 93%; Mouse: 93%; Guinea pig: 86%

Protein Families:

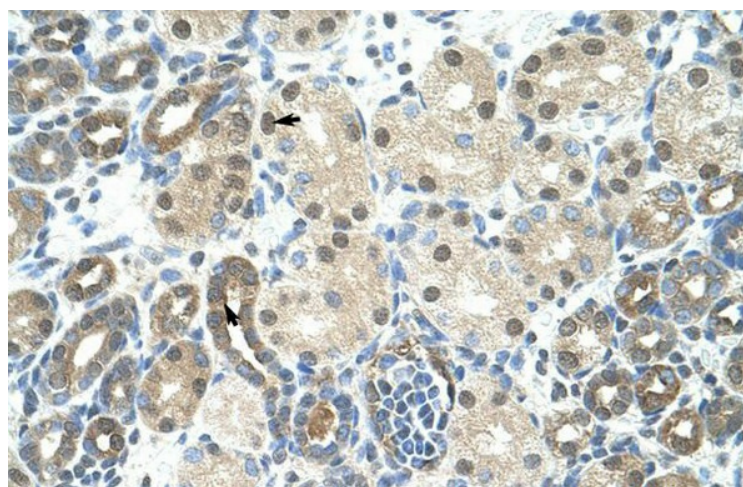
Transcription Factors

Protein Pathways:

Spliceosome

Product images:

WB Suggested Anti-PPIE Antibody Titration: 1.25 ug/ml; ELISA Titer: 1: 62500; Positive Control: K562 cell lysate PPIE is strongly supported by BioGPS gene expression data to be expressed in Human K562 cells



Paraffin Embedded Tissue: Human Kidney
Cellular Data: Epithelial cells of renal tubule
Antibody Concentration: 4.0-8.0 ug/ml
Magnification: 400X