

Product datasheet for **TA345946**

Cyclophilin E (PPIE) Rabbit Polyclonal Antibody

Product data:

Product Type:	Primary Antibodies
Applications:	WB
Recommended Dilution:	WB
Reactivity:	Human
Host:	Rabbit
Isotype:	IgG
Clonality:	Polyclonal
Immunogen:	The immunogen for anti-PPIE antibody: synthetic peptide directed towards the middle region of human PPIE. Synthetic peptide located within the following region: RIIPQFMCQGGDFTNHNGTGGKSIYGKKFDDENFILKHTGPGLLSMANSG
Formulation:	Liquid. Purified antibody supplied in 1x PBS buffer with 0.09% (w/v) sodium azide and 2% sucrose. <i>Note that this product is shipped as lyophilized powder to China customers.</i>
Purification:	Protein A purified
Conjugation:	Unconjugated
Storage:	Store at -20°C as received.
Stability:	Stable for 12 months from date of receipt.
Predicted Protein Size:	26 kDa
Gene Name:	peptidylprolyl isomerase E
Database Link:	NP_982282 Entrez Gene 10450 Human Q9UNP9



[View online »](#)

Background: PPIE is a member of the peptidyl-prolyl cis-trans isomerase (PPIase) family. PPIases catalyze the cis-trans isomerization of proline imidic peptide bonds in oligopeptides and accelerate the folding of proteins. This protein contains a highly conserved cyclophilin (CYP) domain as well as an RNA-binding domain. It was shown to possess PPIase and protein folding activities and also exhibit RNA-binding activity. The protein encoded by this gene is a member of the peptidyl-prolyl cis-trans isomerase (PPIase) family. PPIases catalyze the cis-trans isomerization of proline imidic peptide bonds in oligopeptides and accelerate the folding of proteins. This protein contains a highly conserved cyclophilin (CYP) domain as well as an RNA-binding domain. It was shown to possess PPIase and protein folding activities and also exhibit RNA-binding activity. Three alternatively spliced transcript variants encoding distinct isoforms have been observed.

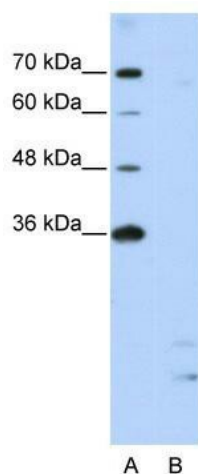
Synonyms: CYP-33; MGC3736; MGC111222

Note: Immunogen Sequence Homology: Pig: 100%; Rat: 100%; Human: 100%; Yeast: 100%; Zebrafish: 100%; Guinea pig: 100%

Protein Families: Transcription Factors

Protein Pathways: Spliceosome

Product images:



WB Suggested Anti-PPIE Antibody Titration: 2.5 ug/ml; Positive Control: Jurkat cell lysate; PPIE is strongly supported by BioGPS gene expression data to be expressed in Human Jurkat cells