

Product datasheet for **TA345945**

RACK1 Rabbit Polyclonal Antibody

Product data:

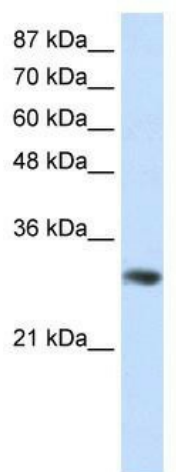
| | |
|--------------------------------|--|
| Product Type: | Primary Antibodies |
| Applications: | WB |
| Recommended Dilution: | WB, IHC |
| Reactivity: | Human |
| Host: | Rabbit |
| Isotype: | IgG |
| Clonality: | Polyclonal |
| Immunogen: | The immunogen for anti-GNB2L1 antibody: synthetic peptide directed towards the C terminal of human GNB2L1. Synthetic peptide located within the following region: LEGKIIVDELKQEIVSTSSKAEPQCTSLAWSADGQTLFAGYTDNLVRVW |
| Formulation: | Liquid. Purified antibody supplied in 1x PBS buffer with 0.09% (w/v) sodium azide and 2% sucrose. <i>Note that this product is shipped as lyophilized powder to China customers.</i> |
| Purification: | Affinity Purified |
| Conjugation: | Unconjugated |
| Storage: | Store at -20°C as received. |
| Stability: | Stable for 12 months from date of receipt. |
| Predicted Protein Size: | 35 kDa |
| Gene Name: | receptor for activated C kinase 1 |
| Database Link: | NP_006089 Entrez Gene 10399 Human P63244 |
| Background: | GNB2L1 seems to bind protein kinase C acting as an intracellular receptor to anchor the activated PKC to the cytoskeleton. |
| Synonyms: | Gnb2-rs1; GNB2L1; H12.3; HLC-7; PIG21 |
| Note: | Immunogen Sequence Homology: Dog: 100%; Pig: 100%; Rat: 100%; Human: 100%; Mouse: 100%; Sheep: 100%; Yeast: 100%; Bovine: 100%; Rabbit: 100%; Zebrafish: 100%; Guinea pig: 100%; Horse: 93% |



[View online »](#)

Protein Families: Druggable Genome

Product images:



WB Suggested Anti-GNB2L1 Antibody Titration: 0.2-1 ug/ml; Positive Control: Jurkat cell lysate; GNB2L1 is supported by BioGPS gene expression data to be expressed in Jurkat

GNB2L1



Sample Type: MCF-7 WT a whole cell lysates (110UG); Primary Dilution: 1.5mg/mL; Secondary Antibody: LI-COR Donkey anti-rabbit; Secondary Dilution: 1: 10,000G; NB2L1 is supported by BioGPS gene expression data to be expressed in MCF7