

## Product datasheet for **TA345944**

### RACK1 Rabbit Polyclonal Antibody

#### Product data:

Product Type:	Primary Antibodies
Applications:	IHC, WB
Recommended Dilution:	WB, IHC
Reactivity:	Human
Host:	Rabbit
Isotype:	IgG
Clonality:	Polyclonal
Immunogen:	The immunogen for anti-GNB2L1 antibody: synthetic peptide directed towards the N terminal of human GNB2L1. Synthetic peptide located within the following region: ISSDGQFALSGSWDGLRLWDLTTGTTTTRRFVGHTKDVLVAFSSDNRQI
Formulation:	Liquid. Purified antibody supplied in 1x PBS buffer with 0.09% (w/v) sodium azide and 2% sucrose. <i>Note that this product is shipped as lyophilized powder to China customers.</i>
Purification:	Affinity Purified
Conjugation:	Unconjugated
Storage:	Store at -20°C as received.
Stability:	Stable for 12 months from date of receipt.
Predicted Protein Size:	35 kDa
Gene Name:	receptor for activated C kinase 1
Database Link:	<a href="#">NP_006089</a> <a href="#">Entrez Gene 10399 Human P63244</a>
Background:	GNB2L1 seems to bind protein kinase C acting as an intracellular receptor to anchor the activated PKC to the cytoskeleton. GNB2L1 may be involved in up-regulation of the activity of kinases such as PKC via binding to KRT1. Together with KRT1 and ITGB1, GNB2L1 serves as a platform for SRC activation or inactivation. GNB2L1 may play an important role in the developing brain and neuronal differentiation.
Synonyms:	Gnb2-rs1; GNB2L1; H12.3; HLC-7; PIG21

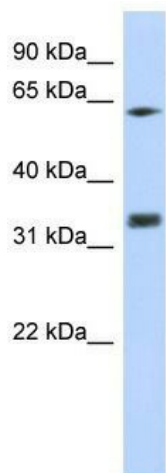


[View online »](#)

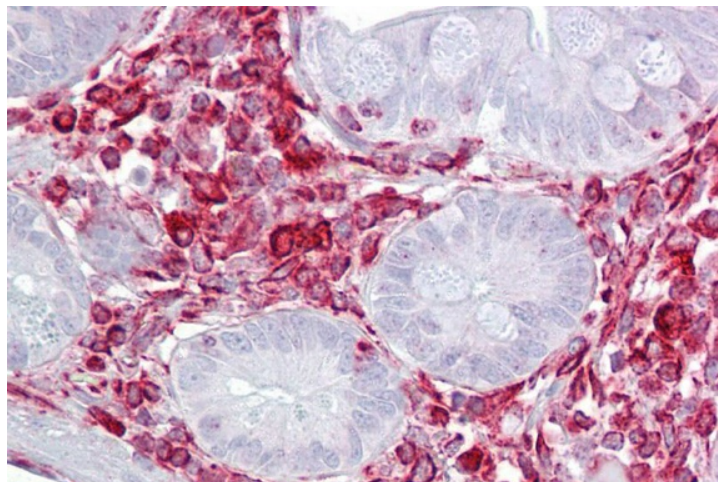
**Note:** Immunogen Sequence Homology: Dog: 100%; Pig: 100%; Rat: 100%; Human: 100%; Mouse: 100%; Sheep: 100%; Yeast: 100%; Bovine: 100%; Rabbit: 100%; Zebrafish: 100%; Guinea pig: 100%

**Protein Families:** Druggable Genome

**Product images:**



WB Suggested Anti-GNB2L1 Antibody Titration: 0.2-1 ug/ml; ELISA Titer: 1: 12500; Positive Control: Transfected 293T



Immunohistochemistry with Small intestine tissue at an antibody concentration of 5 ug/ml using anti-GNB2L1 antibody