

## Product datasheet for **TA345942**

### **RBM12 Rabbit Polyclonal Antibody**

#### **Product data:**

Product Type:	Primary Antibodies
Applications:	WB
Recommended Dilution:	WB
Reactivity:	Human
Host:	Rabbit
Isotype:	IgG
Clonality:	Polyclonal
Immunogen:	The immunogen for anti-RBM12 antibody: synthetic peptide directed towards the middle region of human RBM12. Synthetic peptide located within the following region: VLVDNNGQGLGQALVQFKNEDDARKSERLHRKKLNGREAFVHVVTLEDMR
Formulation:	Liquid. Purified antibody supplied in 1x PBS buffer with 0.09% (w/v) sodium azide and 2% sucrose. <i>Note that this product is shipped as lyophilized powder to China customers.</i>
Purification:	Affinity Purified
Conjugation:	Unconjugated
Storage:	Store at -20°C as received.
Stability:	Stable for 12 months from date of receipt.
Predicted Protein Size:	97 kDa
Gene Name:	RNA binding motif protein 12
Database Link:	<a href="#">NP_006038</a> <a href="#">Entrez Gene 10137 Human</a> <a href="#">Q9NTZ6</a>
Background:	RBM12 contains several RNA-binding motifs, potential transmembrane domains, and proline-rich regions. The function of RBM12 remains unknown. This gene encodes a protein that contains several RNA-binding motifs, potential transmembrane domains, and proline-rich regions. This gene and the gene for copine I overlap at map location 20q11.21. Alternative splicing in the 5' UTR results in two transcript variants. Both variants encode the same protein.

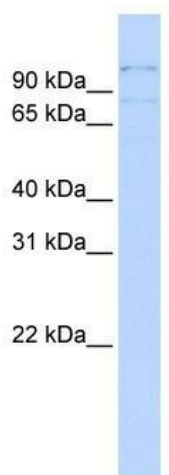


[View online »](#)

**Synonyms:** HRIHFB2091; SWAN

**Note:** Immunogen Sequence Homology: Dog: 100%; Pig: 100%; Rat: 100%; Horse: 100%; Human: 100%; Bovine: 100%; Rabbit: 100%; Guinea pig: 100%; Mouse: 85%

**Product images:**



WB Suggested Anti-RBM12 Antibody Titration:  
0.2-1 ug/ml; ELISA Titer: 1: 62500; Positive  
Control: MCF7 cell lysate RBM12 is supported by  
BioGPS gene expression data to be expressed in  
MCF7