

Product datasheet for **TA345940**

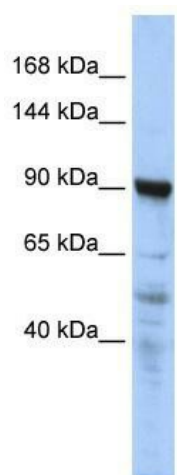
CTAGE5 (MIA2) Rabbit Polyclonal Antibody

Product data:

Product Type:	Primary Antibodies
Applications:	WB
Recommended Dilution:	WB
Reactivity:	Human
Host:	Rabbit
Isotype:	IgG
Clonality:	Polyclonal
Immunogen:	The immunogen for anti-CTAGE5 antibody: synthetic peptide directed towards the N terminal of human CTAGE5. Synthetic peptide located within the following region: DEILCLEKELKEEKSKHSEQDELMADISKRIQSLEDESKSLKSQVAEAKM
Formulation:	Liquid. Purified antibody supplied in 1x PBS buffer with 0.09% (w/v) sodium azide and 2% sucrose. <i>Note that this product is shipped as lyophilized powder to China customers.</i>
Purification:	Affinity Purified
Conjugation:	Unconjugated
Storage:	Store at -20°C as received.
Stability:	Stable for 12 months from date of receipt.
Predicted Protein Size:	91 kDa
Gene Name:	CTAGE family member 5
Database Link:	NP_005921 Entrez Gene 4253 Human Q96PC5
Background:	CTAGE5 is a tumor-associated antigen.
Synonyms:	MEA6; MGEA; MGEA6; MGEA11
Note:	Immunogen Sequence Homology: Horse: 100%; Human: 100%; Dog: 93%; Pig: 93%; Bovine: 93%; Rat: 86%; Rabbit: 85%; Mouse: 77%
Protein Families:	Transmembrane



[View online »](#)

Product images:

WB Suggested Anti-CTAGE5 Antibody Titration:
0.2-1 ug/ml; ELISA Titer: 1: 62500; Positive
Control: HepG2 cell lysateCTAGE5 is strongly
supported by BioGPS gene expression data to be
expressed in Human HepG2 cells