

Product datasheet for **TA345939**

CTAGE5 (MIA2) Rabbit Polyclonal Antibody

Product data:

Product Type:	Primary Antibodies
Applications:	WB
Recommended Dilution:	WB
Reactivity:	Human
Host:	Rabbit
Isotype:	IgG
Clonality:	Polyclonal
Immunogen:	The immunogen for anti-CTAGE5 antibody: synthetic peptide directed towards the middle region of human CTAGE5. Synthetic peptide located within the following region: LLEGPLRLSPLLPGGGGRGSRGPGNPLDHQITNERGESSCDRLTDPHRAP
Formulation:	Liquid. Purified antibody supplied in 1x PBS buffer with 0.09% (w/v) sodium azide and 2% sucrose. <i>Note that this product is shipped as lyophilized powder to China customers.</i>
Purification:	Affinity Purified
Conjugation:	Unconjugated
Storage:	Store at -20°C as received.
Stability:	Stable for 12 months from date of receipt.
Predicted Protein Size:	91 kDa
Gene Name:	CTAGE family member 5
Database Link:	NP_005921 Entrez Gene 4253 Human Q96PC5
Background:	CTAGE5 belongs to the cTAGE family. It functions as tumor-associated antigen. This autoantigen found in several cancer types, including benign meningioma and cutaneous T-cell lymphoma (CTCL).
Synonyms:	MEA6; MGEA; MGEA6; MGEA11
Note:	Immunogen Sequence Homology: Dog: 100%; Pig: 100%; Human: 100%; Bovine: 100%; Rabbit: 92%; Rat: 86%; Horse: 86%; Mouse: 86%; Guinea pig: 86%



[View online »](#)

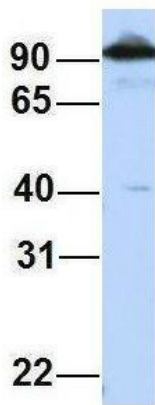
Protein Families: Transmembrane

Product images:



WB Suggested Anti-CTAGE5 Antibody Titration:
0.2-1 ug/ml; ELISA Titer: 1: 62500; Positive
Control: 293T cell lysate

CTAGE5



Rabbit Anti-CTAGE5
Sample Type: Human HepG2
Antibody Concentration: 1ug/mL

Host: Rabbit; Target Name: CTAGE5; Sample
Tissue: HepG2; Antibody Dilution: 1.0 ug/ml;
CTAGE5 is strongly supported by BioGPS gene
expression data to be expressed in Human
HepG2 cells