

## Product datasheet for **TA345936**

### BCAS2 Rabbit Polyclonal Antibody

#### Product data:

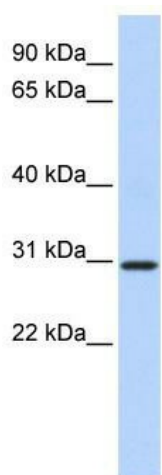
Product Type:	Primary Antibodies
Applications:	WB
Recommended Dilution:	WB
Reactivity:	Human
Host:	Rabbit
Isotype:	IgG
Clonality:	Polyclonal
Immunogen:	The immunogen for anti-BCAS2 antibody: synthetic peptide directed towards the N terminal of human BCAS2. Synthetic peptide located within the following region: MAGTGLVAGEVVVDALPYFDQGYEAPGVREAAAALVEEETRRYRPTKNYL
Formulation:	Liquid. Purified antibody supplied in 1x PBS buffer with 0.09% (w/v) sodium azide and 2% sucrose. <i>Note that this product is shipped as lyophilized powder to China customers.</i>
Purification:	Affinity Purified
Conjugation:	Unconjugated
Storage:	Store at -20°C as received.
Stability:	Stable for 12 months from date of receipt.
Predicted Protein Size:	26 kDa
Gene Name:	breast carcinoma amplified sequence 2
Database Link:	<a href="#">NP_005863</a> <a href="#">Entrez Gene 10286 Human O75934</a>
Background:	BCAS2 belongs to the SPF27 family. It is involved in mRNA splicing. The protein might play an important role in breast cancer development by increasing the estrogen receptor's function.
Synonyms:	DAM1; Snt309; SPF27
Note:	Immunogen Sequence Homology: Dog: 100%; Pig: 100%; Rat: 100%; Horse: 100%; Human: 100%; Mouse: 100%; Bovine: 100%; Rabbit: 100%; Guinea pig: 100%; Zebrafish: 86%



[View online »](#)

Protein Pathways: Spliceosome

**Product images:**



WB Suggested Anti-BCAS2 Antibody Titration: 0.2-1 ug/ml; ELISA Titer: 1: 62500; Positive Control: Human brain