

## Product datasheet for **TA345934**

### SMNDC1 Rabbit Polyclonal Antibody

#### Product data:

Product Type:	Primary Antibodies
Applications:	IHC, WB
Recommended Dilution:	WB
Reactivity:	Human
Host:	Rabbit
Isotype:	IgG
Clonality:	Polyclonal
Immunogen:	The immunogen for anti-SMNDC1 antibody: synthetic peptide directed towards the middle region of human SMNDC1. Synthetic peptide located within the following region: QFNNRAYSKNKKGQVKRSIFASPESVTGKVGVGTCGIADKPMTQYQDTSK
Formulation:	Liquid. Purified antibody supplied in 1x PBS buffer with 0.09% (w/v) sodium azide and 2% sucrose. <i>Note that this product is shipped as lyophilized powder to China customers.</i>
Purification:	Affinity Purified
Conjugation:	Unconjugated
Storage:	Store at -20°C as received.
Stability:	Stable for 12 months from date of receipt.
Predicted Protein Size:	27 kDa
Gene Name:	survival motor neuron domain containing 1
Database Link:	<a href="#">NP_005862</a> <a href="#">Entrez Gene 10285 Human</a> <a href="#">O75940</a>



[View online »](#)

**Background:**

This gene is a paralog of SMN1 gene, which encodes the survival motor neuron protein, mutations in which are cause of autosomal recessive proximal spinal muscular atrophy. SMNDC1 is a nuclear protein that has been identified as a constituent of the spliceosome complex. This gene is differentially expressed, with abundant levels in skeletal muscle, and may share similar cellular function as the SMN1 gene. This gene is a paralog of SMN1 gene, which encodes the survival motor neuron protein, mutations in which are cause of autosomal recessive proximal spinal muscular atrophy. The protein encoded by this gene is a nuclear protein that has been identified as a constituent of the spliceosome complex. This gene is differentially expressed, with abundant levels in skeletal muscle, and may share similar cellular function as the SMN1 gene.

**Synonyms:**

SMNR; SPF30; TDRD16C

**Note:**

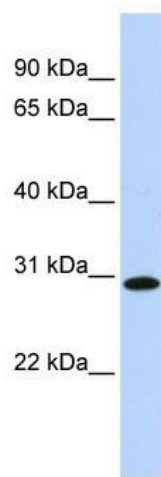
Immunogen Sequence Homology: Dog: 100%; Pig: 100%; Rat: 100%; Goat: 100%; Horse: 100%; Human: 100%; Mouse: 100%; Bovine: 100%; Rabbit: 100%; Guinea pig: 100%; Zebrafish: 93%

**Protein Families:**

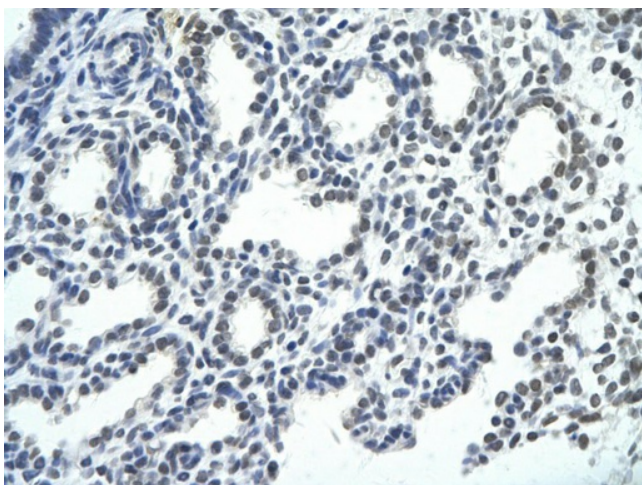
Stem cell - Pluripotency

**Protein Pathways:**

Spliceosome

**Product images:**

WB Suggested Anti-SMNDC1 Antibody Titration:  
0.2-1 ug/ml; ELISA Titer: 1: 1562500; Positive  
Control: Human Lung



Rabbit Anti-SMNDC1 antibody; Paraffin  
Embedded Tissue: Human Lung cell Cellular  
Data: alveolar cell of renal tubule; Antibody  
Concentration: 4.0-8.0 ug/ml; Magnification: 400X