

## Product datasheet for **TA345929**

### GIPC (GIPC1) Rabbit Polyclonal Antibody

#### Product data:

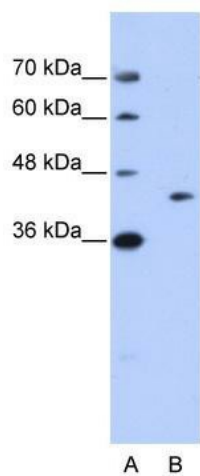
Product Type:	Primary Antibodies
Applications:	WB
Recommended Dilution:	WB
Reactivity:	Human
Host:	Rabbit
Isotype:	IgG
Clonality:	Polyclonal
Immunogen:	The immunogen for anti-GIPC1 antibody: synthetic peptide directed towards the N terminal of human GIPC1. Synthetic peptide located within the following region: SGGPQMGLPPPPPALRPRLVFHTQLAHGSPTGRIEGFTNVKELYGKIAEA
Formulation:	Liquid. Purified antibody supplied in 1x PBS buffer with 0.09% (w/v) sodium azide and 2% sucrose. <i>Note that this product is shipped as lyophilized powder to China customers.</i>
Purification:	Affinity Purified
Conjugation:	Unconjugated
Storage:	Store at -20°C as received.
Stability:	Stable for 12 months from date of receipt.
Predicted Protein Size:	37 kDa
Gene Name:	GIPC PDZ domain containing family member 1
Database Link:	<a href="#">NP_974199</a> <a href="#">Entrez Gene 10755 Human</a> <a href="#">O14908</a>
Background:	GIPC1 belongs to the GIPC family. It may be involved in G protein-linked signaling.
Synonyms:	C19orf3; GIPC; GLUT1CBP; Hs.6454; IIP-1; NIP; RGS19IP1; SEMCAP; SYNECTIN; SYNECTIN; TIP-2
Note:	Immunogen Sequence Homology: Dog: 100%; Pig: 100%; Rat: 100%; Human: 100%; Mouse: 100%; Bovine: 100%; Zebrafish: 100%; Guinea pig: 100%



[View online »](#)

Protein Families: Druggable Genome

### Product images:



WB Suggested Anti-GIPC1 Antibody Titration: 0.2-1 ug/ml; ELISA Titer: 1: 62500; Positive Control: Jurkat cell lysate