

## Product datasheet for **TA345928**

### GTP binding protein era homolog (ERAL1) Rabbit Polyclonal Antibody

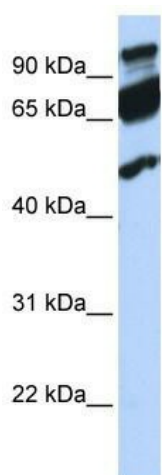
#### Product data:

Product Type:	Primary Antibodies
Applications:	WB
Recommended Dilution:	WB
Reactivity:	Human
Host:	Rabbit
Isotype:	IgG
Clonality:	Polyclonal
Immunogen:	The immunogen for anti-ERAL1 antibody: synthetic peptide directed towards the middle region of human ERAL1. Synthetic peptide located within the following region: KVHTTRCQALGVITEKETQVILLDTPGIISPGKQKRHHLELSLLEDPWKS
Formulation:	Liquid. Purified antibody supplied in 1x PBS buffer with 0.09% (w/v) sodium azide and 2% sucrose. <i>Note that this product is shipped as lyophilized powder to China customers.</i>
Purification:	Affinity Purified
Conjugation:	Unconjugated
Storage:	Store at -20°C as received.
Stability:	Stable for 12 months from date of receipt.
Predicted Protein Size:	48 kDa
Gene Name:	Era like 12S mitochondrial rRNA chaperone 1
Database Link:	<a href="#">NP_005693</a> <a href="#">Entrez Gene 26284 Human</a> <a href="#">O75616</a>
Background:	ERAL1 belongs to the era/mnmE GTP-binding protein family.
Synonyms:	CEGA; ERA; ERA-W; ERAL1A; H-ERA; HERA-A; HERA-B
Note:	Immunogen Sequence Homology: Human: 100%; Rat: 93%; Mouse: 93%; Rabbit: 93%; Dog: 86%; Pig: 86%; Horse: 86%; Bovine: 86%; Guinea pig: 86%



[View online »](#)

## Product images:



WB Suggested Anti-ERAL1 Antibody Titration: 0.2-1 ug/ml; ELISA Titer: 1: 312500; Positive Control: 721\_B cell lysate; ERAL1 is supported by BioGPS gene expression data to be expressed in 721\_B