

## Product datasheet for **TA345927**

### GTP binding protein era homolog (ERAL1) Rabbit Polyclonal Antibody

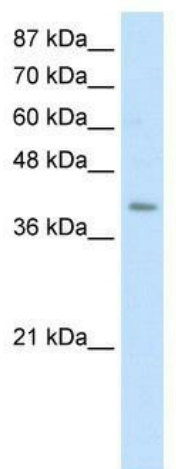
#### Product data:

Product Type:	Primary Antibodies
Applications:	WB
Recommended Dilution:	WB
Reactivity:	Human
Host:	Rabbit
Isotype:	IgG
Clonality:	Polyclonal
Immunogen:	The immunogen for anti-ERAL1 antibody: synthetic peptide directed towards the C terminal of human ERAL1. Synthetic peptide located within the following region: KTAVWEEGPGGELVIQKLLVPKESYVKLLIGPKGHVISQIAQEAGHDLM
Formulation:	Liquid. Purified antibody supplied in 1x PBS buffer with 0.09% (w/v) sodium azide and 2% sucrose. <i>Note that this product is shipped as lyophilized powder to China customers.</i>
Purification:	Affinity Purified
Conjugation:	Unconjugated
Storage:	Store at -20°C as received.
Stability:	Stable for 12 months from date of receipt.
Predicted Protein Size:	48 kDa
Gene Name:	Era like 12S mitochondrial rRNA chaperone 1
Database Link:	<a href="#">NP_005693</a> <a href="#">Entrez Gene 26284 Human O75616</a>
Background:	The function remains unknown.
Synonyms:	CEGA; ERA; ERA-W; ERAL1A; H-ERA; HERA-A; HERA-B
Note:	Immunogen Sequence Homology: Human: 100%; Dog: 86%; Rat: 86%; Horse: 86%; Mouse: 86%; Rabbit: 86%; Pig: 79%; Bovine: 79%; Guinea pig: 79%



[View online »](#)

## Product images:



WB Suggested Anti-ERAL1 Antibody Titration: 0.2-1 ug/ml; ELISA Titer: 1: 62500; Positive Control: HepG2 cell lysate; ERAL1 is supported by BioGPS gene expression data to be expressed in HepG2