

Product datasheet for **TA345924**

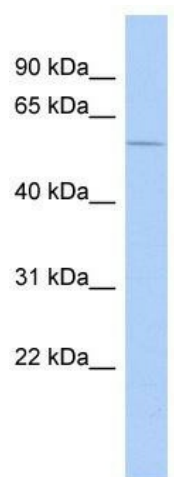
SFRS4 (SRSF4) Rabbit Polyclonal Antibody

Product data:

Product Type:	Primary Antibodies
Applications:	WB
Recommended Dilution:	WB
Reactivity:	Human
Host:	Rabbit
Isotype:	IgG
Clonality:	Polyclonal
Immunogen:	The immunogen for anti-SFRS4 antibody: synthetic peptide directed towards the middle region of human SFRS4. Synthetic peptide located within the following region: RSREESRSRSRSRSKRSERSRKRGRDSKAGSSKKKKKEDTDRSQSRSPS
Formulation:	Liquid. Purified antibody supplied in 1x PBS buffer with 0.09% (w/v) sodium azide and 2% sucrose. <i>Note that this product is shipped as lyophilized powder to China customers.</i>
Purification:	Affinity Purified
Conjugation:	Unconjugated
Storage:	Store at -20°C as received.
Stability:	Stable for 12 months from date of receipt.
Predicted Protein Size:	57 kDa
Gene Name:	serine/arginine-rich splicing factor 4
Database Link:	NP_005617 Entrez Gene 6429 Human Q08170
Background:	SFRS4 is a member of the arginine/serine-rich splicing factor family. SFRS4 likely functions in mRNA processing.
Synonyms:	SFRS4; SRP75
Note:	Immunogen Sequence Homology: Human: 100%; Dog: 93%; Pig: 86%; Rat: 86%
Protein Pathways:	Spliceosome



[View online »](#)

Product images:

WB Suggested Anti-SFRS4 Antibody Titration: 0.2-1 ug/ml; ELISA Titer: 1: 12500; Positive Control: PANC1 cell lysate; SRSF4 is supported by BioGPS gene expression data to be expressed in PANC1