

Product datasheet for **TA345923**

Lysyl tRNA synthetase (KARS) Rabbit Polyclonal Antibody

Product data:

Product Type:	Primary Antibodies
Applications:	IHC, WB
Recommended Dilution:	WB, IHC
Reactivity:	Human
Host:	Rabbit
Isotype:	IgG
Clonality:	Polyclonal
Immunogen:	The immunogen for anti-KARS antibody: synthetic peptide directed towards the C terminal of human KARS. Synthetic peptide located within the following region: GMGIDRVAMFLTDSNNIKEVLLFPAMKPEDKKENVATTDLTLESTTVGTSV
Formulation:	Liquid. Purified antibody supplied in 1x PBS buffer with 0.09% (w/v) sodium azide and 2% sucrose. <i>Note that this product is shipped as lyophilized powder to China customers.</i>
Purification:	Affinity Purified
Conjugation:	Unconjugated
Storage:	Store at -20°C as received.
Stability:	Stable for 12 months from date of receipt.
Predicted Protein Size:	66 kDa
Gene Name:	lysyl-tRNA synthetase
Database Link:	NP_005539 Entrez Gene 3735 Human Q15046



[View online »](#)

Background:

Aminoacyl-tRNA synthetases are a class of enzymes that charge tRNAs with their cognate amino acids. Lysyl-tRNA synthetase is a homodimer localized to the cytoplasm which belongs to the class II family of tRNA synthetases. It has been shown to be a target of autoantibodies in the human autoimmune diseases, polymyositis or dermatomyositis. Aminoacyl-tRNA synthetases are a class of enzymes that charge tRNAs with their cognate amino acids. Lysyl-tRNA synthetase is a homodimer localized to the cytoplasm which belongs to the class II family of tRNA synthetases. It has been shown to be a target of autoantibodies in the human autoimmune diseases, polymyositis or dermatomyositis.

Synonyms:

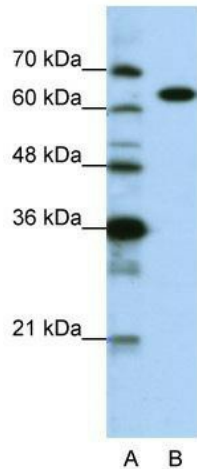
CMTRIB; DFNB89; KARS1; KARS2; KRS

Note:

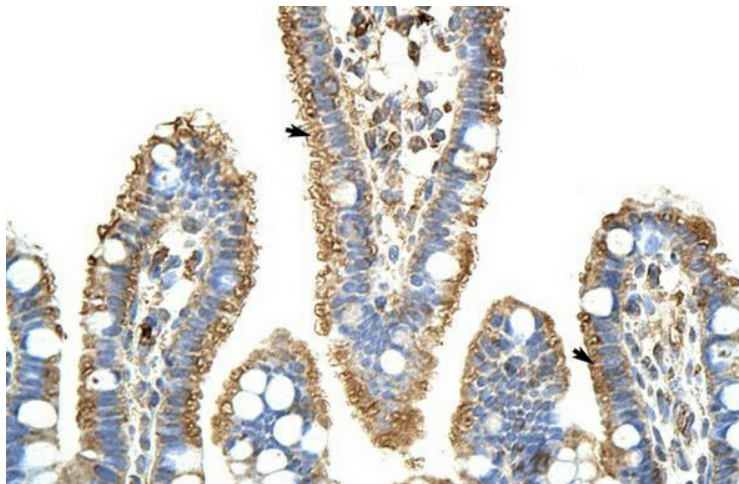
Immunogen Sequence Homology: Human: 100%; Bovine: 92%; Horse: 88%; Pig: 86%; Rat: 86%; Rabbit: 86%; Guinea pig: 85%; Mouse: 79%

Protein Pathways:

Aminoacyl-tRNA biosynthesis

Product images:


WB Suggested Anti-KARS Antibody Titration: 0.2-1 ug/ml; ELISA Titer: 1: 312500; Positive Control: HepG2 cell lysate; KARS is strongly supported by BioGPS gene expression data to be expressed in Human HepG2 cells



Rabbit Anti-KARS Antibody; Paraffin Embedded Tissue: Human Intestine; Cellular Data: Epithelial cells of intestinal villas; Antibody Concentration: 4.0-8.0 ug/ml; Magnification: 400X