

## Product datasheet for **TA345918**

### Nucleolin (NCL) Rabbit Polyclonal Antibody

#### Product data:

Product Type:	Primary Antibodies
Applications:	IHC, WB
Recommended Dilution:	WB, IHC
Reactivity:	Human
Host:	Rabbit
Isotype:	IgG
Clonality:	Polyclonal
Immunogen:	The immunogen for anti-NCL antibody: synthetic peptide directed towards the C terminal of human NCL. Synthetic peptide located within the following region: GGFGGRGGGRGGGRGGFGGRGRGGFGGRGGFRGGRGGGDHQPQKTKFE
Formulation:	Liquid. Purified antibody supplied in 1x PBS buffer with 0.09% (w/v) sodium azide and 2% sucrose. <i>Note that this product is shipped as lyophilized powder to China customers.</i>
Purification:	Protein A purified
Conjugation:	Unconjugated
Storage:	Store at -20°C as received.
Stability:	Stable for 12 months from date of receipt.
Predicted Protein Size:	78 kDa
Gene Name:	nucleolin
Database Link:	<a href="#">NP_005372</a> <a href="#">Entrez Gene 4691 Human P19338</a>

**Background:** Nucleolin (NCL), a eukaryotic nucleolar phosphoprotein, is involved in the synthesis and maturation of ribosomes. It is located mainly in dense fibrillar regions of the nucleolus. Nucleolin (NCL), a eukaryotic nucleolar phosphoprotein, is involved in the synthesis and maturation of ribosomes. It is located mainly in dense fibrillar regions of the nucleolus. Human NCL gene consists of 14 exons with 13 introns and spans approximately 11kb. The intron 11 of the NCL gene encodes a small nucleolar RNA, termed U20.



[View online »](#)

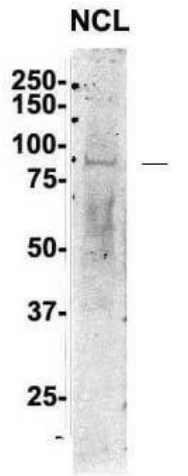
**Synonyms:** C23

**Note:** Immunogen Sequence Homology: Dog: 100%; Pig: 100%; Rat: 100%; Horse: 100%; Human: 100%; Bovine: 100%; Rabbit: 100%; Guinea pig: 100%; Mouse: 93%

**Protein Families:** Druggable Genome, Stem cell - Pluripotency

**Protein Pathways:** Pathogenic Escherichia coli infection

**Product images:**

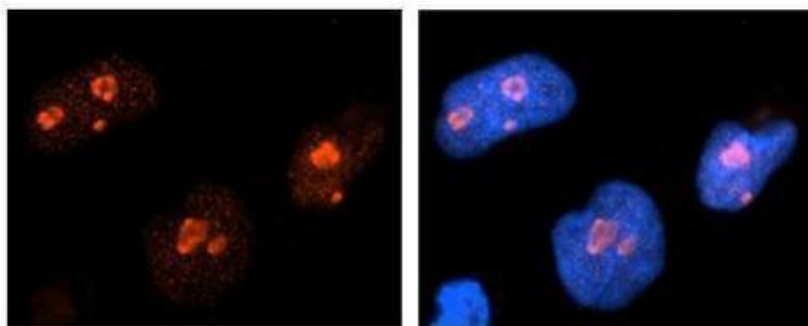


Sample Type: 1. Human NT-2 cells (60ug); Primary Antibody Dilution: 1:2 ug/ml; Secondary Antibody: IRDye 800CW goat anti-rabbit from LI-COR Bioscience; Secondary Antibody Dilution: 1:20,000



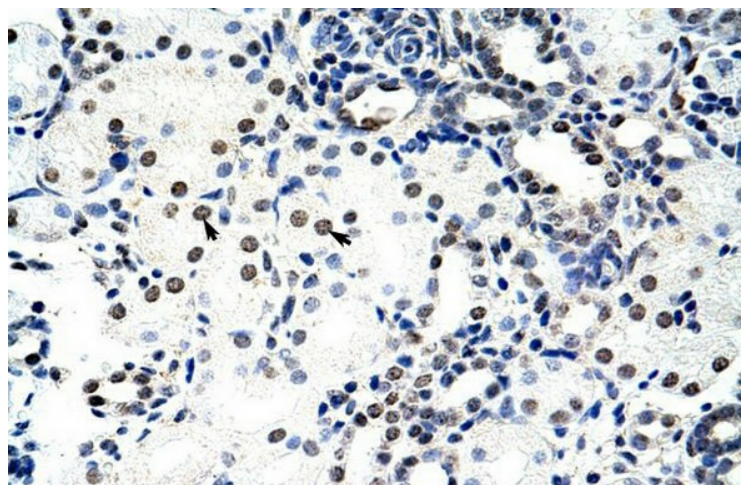
WB Suggested Anti-NCL Antibody Titration: 1.25 ug/ml; Positive Control: Daudi cell lysate; NCL is supported by BioGPS gene expression data to be expressed in Daudi

## NCL



Antibody--RED  
DAPI--Blue

Sample Type: Human brain stem cells Primary Antibody Dilution: 1: 500; Secondary Antibody: Goat anti-rabbit Alexa-Fluor 594; Secondary Antibody: ilution: 1: 1000; Color/Signal Descriptions: NCL: Red DAPI: Blue; Gene Name: NCL



Rabbit Anti-NCL Antibody; Paraffin Embedded Tissue: Human Kidney; Cellular Data: Epithelial cells of renal tubule; Antibody Concentration: 4.0-8.0 ug/ml; Magnification: 400X