

Product datasheet for **TA345917**

Nucleolin (NCL) Rabbit Polyclonal Antibody

Product data:

Product Type:	Primary Antibodies
Applications:	IHC, WB
Recommended Dilution:	WB, IHC
Reactivity:	Human
Host:	Rabbit
Isotype:	IgG
Clonality:	Polyclonal
Immunogen:	The immunogen for anti-NCL antibody: synthetic peptide directed towards the N terminal of human NCL. Synthetic peptide located within the following region: GKALVATPGKKGAAIPAKGAKNGKNAKKEDSDEEEEDDDSEEEDEDEDED
Formulation:	Liquid. Purified antibody supplied in 1x PBS buffer with 0.09% (w/v) sodium azide and 2% sucrose. <i>Note that this product is shipped as lyophilized powder to China customers.</i>
Purification:	Affinity Purified
Conjugation:	Unconjugated
Storage:	Store at -20°C as received.
Stability:	Stable for 12 months from date of receipt.
Predicted Protein Size:	78 kDa
Gene Name:	nucleolin
Database Link:	NP_005372 Entrez Gene 4691 Human P19338



[View online »](#)

Background:

Nucleolin (NCL), a eukaryotic nucleolar phosphoprotein, is involved in the synthesis and maturation of ribosomes. It is located mainly in dense fibrillar regions of the nucleolus. Nucleolin (NCL), a eukaryotic nucleolar phosphoprotein, is involved in the synthesis and maturation of ribosomes. It is located mainly in dense fibrillar regions of the nucleolus. Human NCL gene consists of 14 exons with 13 introns and spans approximately 11kb. The intron 11 of the NCL gene encodes a small nucleolar RNA, termed U20. Nucleolin (NCL), a eukaryotic nucleolar phosphoprotein, is involved in the synthesis and maturation of ribosomes. It is located mainly in dense fibrillar regions of the nucleolus. Human NCL gene consists of 14 exons with 13 introns and spans approximately 11kb. The intron 11 of the NCL gene encodes a small nucleolar RNA, termed U20.

Synonyms:

C23

Note:

Immunogen Sequence Homology: Human: 100%; Dog: 93%; Rat: 93%; Horse: 93%; Mouse: 91%; Bovine: 87%; Pig: 86%; Zebrafish: 85%; Yeast: 83%; Rabbit: 77%

Protein Families:

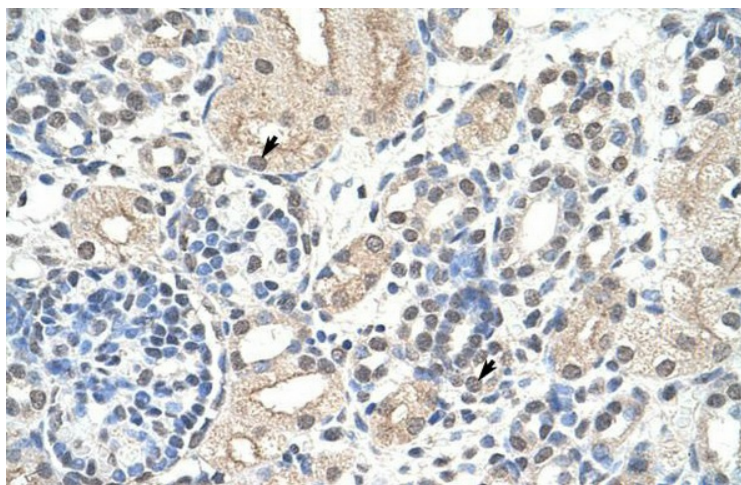
Druggable Genome, Stem cell - Pluripotency

Protein Pathways:

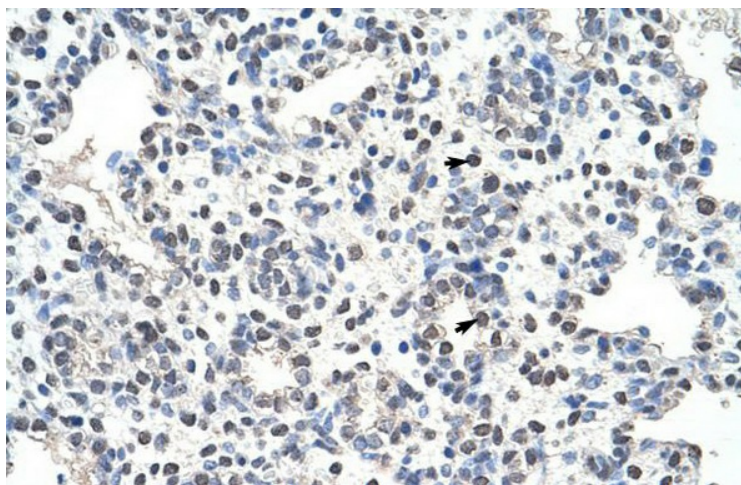
Pathogenic Escherichia coli infection

Product images:

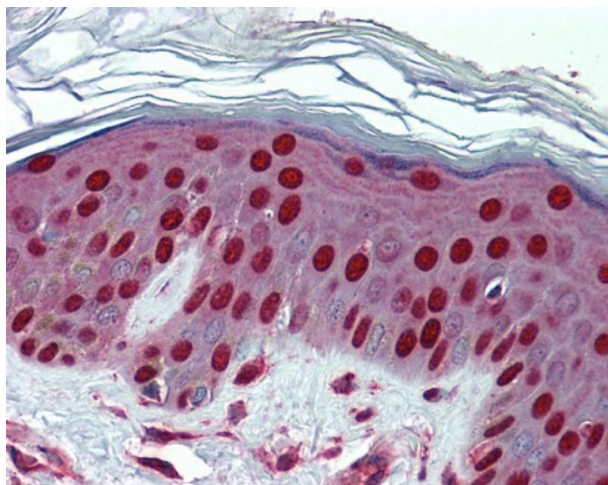
WB Suggested Anti-NCL Antibody Titration: 0.2-1 ug/ml
Positive Control: Jurkat
NCL is supported by BioGPS gene expression data to be expressed in Jurkat



Rabbit Anti-NCL Antibody; Paraffin Embedded Tissue: Human Kidney; Cellular Data: Epithelial cells of renal tubule; Antibody Concentration: 4.0-8.0 ug/ml; Magnification: 400X



Rabbit Anti-NCL Antibody; Paraffin Embedded Tissue: Human Lung; Cellular Data: Alveolar cells; Antibody Concentration: 4.0-8.0 ug/ml; Magnification: 400X



Human Skin