

Product datasheet for **TA345915**

HDLBP Rabbit Polyclonal Antibody

Product data:

Product Type:	Primary Antibodies
Applications:	WB
Recommended Dilution:	WB
Reactivity:	Human
Host:	Rabbit
Isotype:	IgG
Clonality:	Polyclonal
Immunogen:	The immunogen for anti-HDLBP antibody: synthetic peptide directed towards the N terminal of human HDLBP. Synthetic peptide located within the following region: MSSVAVLTQESFAEHRSGLVPPQIKVATLNSEESDPPTYKDAPPLPEK
Formulation:	Liquid. Purified antibody supplied in 1x PBS buffer with 0.09% (w/v) sodium azide and 2% sucrose. <i>Note that this product is shipped as lyophilized powder to China customers.</i>
Purification:	Affinity Purified
Conjugation:	Unconjugated
Storage:	Store at -20°C as received.
Stability:	Stable for 12 months from date of receipt.
Predicted Protein Size:	141 kDa
Gene Name:	high density lipoprotein binding protein
Database Link:	NP_005327 Entrez Gene 3069 Human Q00341



[View online »](#)

Background:

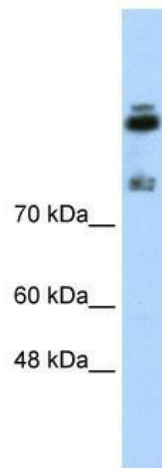
HDLBP is high density lipoprotein-binding protein, also known as vigilin, is a 110-kD protein that specifically binds HDL molecules and may function in the removal of excess cellular cholesterol. High density lipoprotein-binding protein, also known as vigilin, is a 110-kD protein that specifically binds HDL molecules and may function in the removal of excess cellular cholesterol. High density lipoprotein-binding protein, also known as vigilin, is a 110-kD protein that specifically binds HDL molecules and may function in the removal of excess cellular cholesterol. [supplied by OMIM]

Synonyms:

HBP; PRO2900; VGL

Note:

Immunogen Sequence Homology: Dog: 100%; Pig: 100%; Rat: 100%; Horse: 100%; Human: 100%; Rabbit: 100%; Guinea pig: 100%; Mouse: 93%; Bovine: 93%

Product images:

WB Suggested Anti-HDLBP Antibody Titration:
0.2-1 ug/ml; ELISA Titer: 1: 62500; Positive
Control: Jurkat cell lysate