

Product datasheet for TA345914

Ptbp3 Rabbit Polyclonal Antibody

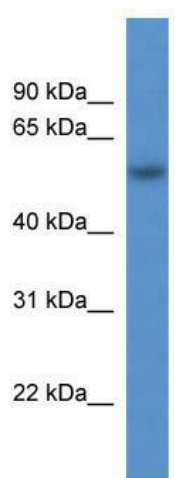
Product data:

Product Type:	Primary Antibodies
Applications:	WB
Recommended Dilution:	WB
Reactivity:	Mouse
Host:	Rabbit
Isotype:	IgG
Clonality:	Polyclonal
Immunogen:	The immunogen for anti-Rod1 antibody: synthetic peptide corresponding to a region of Mouse. Synthetic peptide located within the following region: YYTPVTPHLRSQPVYIQYSNHRELKTDNLPNQARAQAALQAVSAVQSGNL
Formulation:	Liquid. Purified antibody supplied in 1x PBS buffer with 0.09% (w/v) sodium azide and 2% sucrose.
Purification:	Affinity Purified
Conjugation:	Unconjugated
Storage:	Store at -20°C as received.
Stability:	Stable for 12 months from date of receipt.
Predicted Protein Size:	56 kDa
Gene Name:	polypyrimidine tract binding protein 3
Database Link:	NP_659153 Entrez Gene 230257 Mouse Q8BHD7
Background:	Rod1 may play a role in regulation of differentiation. In vitro, It binds RNA, preferentially to both poly(G) and poly(U)
Synonyms:	5830471K22Rik; AA407443; AI462022; AW107884; C86549; Rod1
Note:	Immunogen Sequence Homology: Pig: 100%; Rat: 100%; Human: 100%; Mouse: 100%; Rabbit: 100%; Guinea pig: 100%; Horse: 93%; Bovine: 93%; Zebrafish: 93%; Dog: 79%



[View online »](#)

Product images:



WB Suggested Anti-Rod1 Antibody Titration: 0.2-1 ug/ml; ELISA Titer: 1: 12500; Positive Control: Mouse Liver