

Product datasheet for **TA345913**

Nuclear Matrix Protein p84 (THOC1) Rabbit Polyclonal Antibody

Product data:

Product Type:	Primary Antibodies
Applications:	IHC, WB
Recommended Dilution:	WB, IHC
Reactivity:	Mouse, Human
Host:	Rabbit
Isotype:	IgG
Clonality:	Polyclonal
Immunogen:	The immunogen for anti-THOC1 antibody: synthetic peptide directed towards the C terminal of human THOC1. Synthetic peptide located within the following region: TNQFKSLQEYLENMVIKLAKELEPPPEEIKTGEDEDEEDNDALLKENES
Formulation:	Liquid. Purified antibody supplied in 1x PBS buffer with 0.09% (w/v) sodium azide and 2% sucrose. <i>Note that this product is shipped as lyophilized powder to China customers.</i>
Purification:	Affinity Purified
Conjugation:	Unconjugated
Storage:	Store at -20°C as received.
Stability:	Stable for 12 months from date of receipt.
Predicted Protein Size:	76 kDa
Gene Name:	THO complex 1
Database Link:	NP_005122 Entrez Gene 225160 Mouse Entrez Gene 9984 Human Q96FV9
Background:	THOC1 is part of the TREX (transcription/export) complex, which includes TEX1, THO2, ALY, and UAP56. HPR1 is part of the TREX (transcription/export) complex, which includes TEX1 (MIM 606929), THO2 (MIM 300395), ALY (MIM 604171), and UAP56 (MIM 606390). [supplied by OMIM]. Publication Note: This RefSeq record includes a subset of the publications that are available for this gene. Please see the Entrez Gene record to access additional publications.
Synonyms:	HPR1; P84; P84N5



[View online »](#)

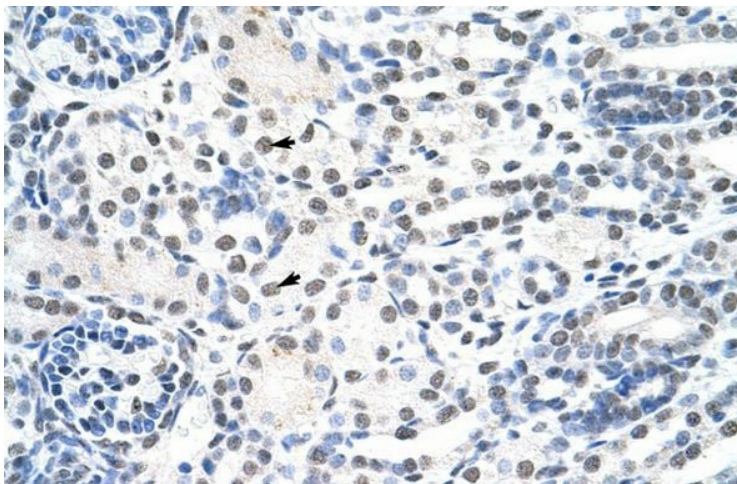
Note: Immunogen Sequence Homology: Dog: 100%; Pig: 100%; Rat: 100%; Horse: 100%; Human: 100%; Mouse: 100%; Bovine: 100%; Rabbit: 100%; Guinea pig: 100%; Yeast: 77%; Zebrafish: 77%

Protein Pathways: Proteasome, Spliceosome

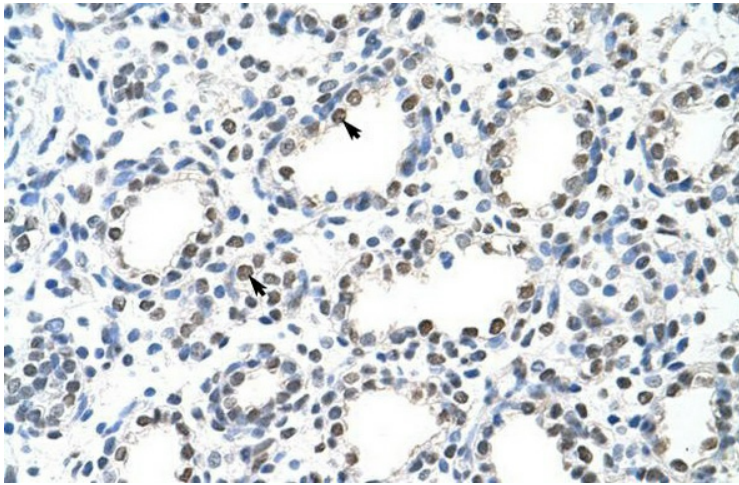
Product images:



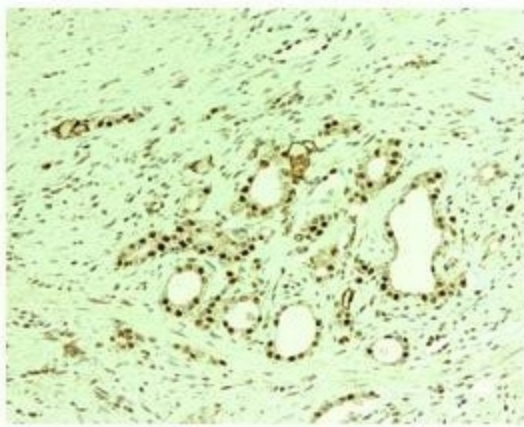
WB Suggested Anti-THOC1 Antibody Titration: 0.2-1 ug/ml; ELISA Titer: 1: 312500; Positive Control: HepG2 cell lysate



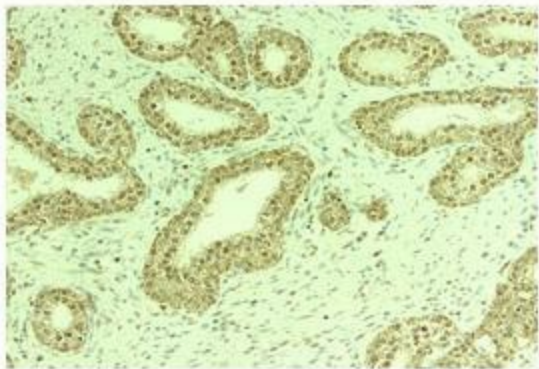
Rabbit Anti-THOC1 Antibody; Paraffin Embedded Tissue: Human Kidney; Cellular Data: Epithelial cells of renal tubule; Antibody Concentration: 4.0-8.0 ug/ml; Magnification: 400X



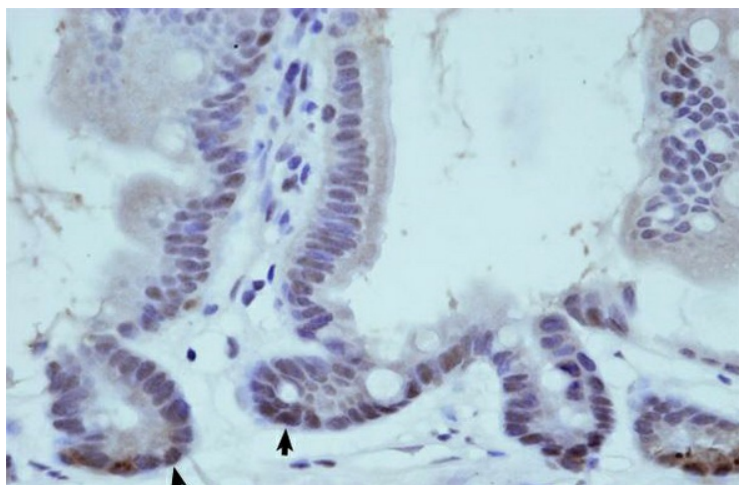
Rabbit Anti-THOC1 Antibody; Paraffin Embedded Tissue: Human Lung; Cellular Data: Alveolar cells; Antibody Concentration: 4.0-8.0 ug/ml; Magnification: 400X



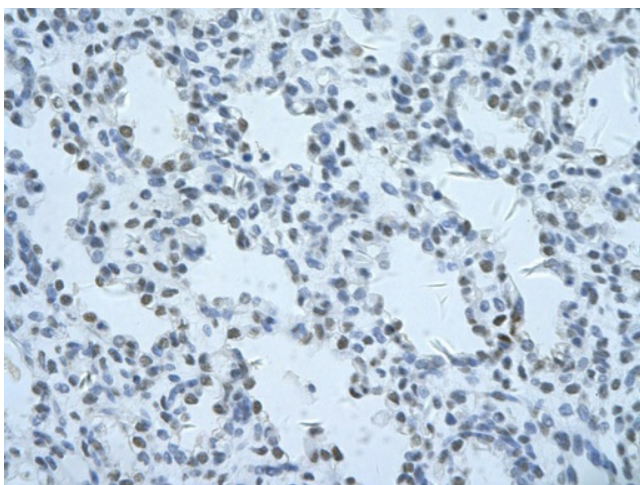
Rabbit Anti-THOC1 Antibody; Paraffin Embedded Tissue: Murine Small Intestine; Cellular Data: Crypt-Villus Axis; Antibody Concentration: 0.1 ug/ml; Magnification: 40X



human prostate tumor Primary Antibodies (1: 150 dilution)



human prostate Primary Antibodies (1: 150 dilution)



Rabbit Anti-THOC1 Antibody; Paraffin Embedded Tissue: Human alveolar cell; Cellular Data: Epithelial cells of renal tubule; Antibody Concentration: 4.0-8.0 ug/ml; Magnification: 400X