

Product datasheet for TA345912

Nuclear Matrix Protein p84 (THOC1) Rabbit Polyclonal Antibody

Product data:

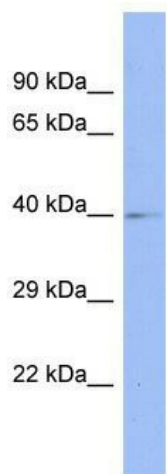
Product Type:	Primary Antibodies
Applications:	WB
Recommended Dilution:	WB
Reactivity:	Human
Host:	Rabbit
Isotype:	IgG
Clonality:	Polyclonal
Immunogen:	The immunogen for Anti-THOC1 antibody is: synthetic peptide directed towards the C-terminal region of Human THOC1. Synthetic peptide located within the following region: NEQESTLGQKHTEDREEGMDVEEGEMGDEEAPTTCISIPIDYNLYRKFWSL
Formulation:	Liquid. Purified antibody supplied in 1x PBS buffer with 0.09% (w/v) sodium azide and 2% sucrose. <i>Note that this product is shipped as lyophilized powder to China customers.</i>
Purification:	Affinity Purified
Conjugation:	Unconjugated
Storage:	Store at -20°C as received.
Stability:	Stable for 12 months from date of receipt.
Predicted Protein Size:	41 kDa
Gene Name:	THO complex 1
Database Link:	NP_005122 Entrez Gene 9984 Human Q96FV9
Background:	THOC1 is part of the TREX (transcription/export) complex, which includes TEX1, THO2, ALY, and UAP56.
Synonyms:	HPR1; P84; P84N5
Note:	Immunogen Sequence Homology: Dog: 100%; Pig: 100%; Rat: 100%; Horse: 100%; Human: 100%; Mouse: 100%; Bovine: 100%; Rabbit: 100%; Guinea pig: 93%; Zebrafish: 83%



[View online »](#)

Protein Pathways: Proteasome, Spliceosome

Product images:



Host: Rabbit; Target Name: THOC1; Sample
Tissue: ACHN Whole cell lysates; Antibody
Dilution: 1.0 ug/ml