

Product datasheet for **TA345911**

Y14 (RBM8A) Rabbit Polyclonal Antibody

Product data:

Product Type:	Primary Antibodies
Applications:	IHC, WB
Recommended Dilution:	WB, IHC
Reactivity:	Human
Host:	Rabbit
Isotype:	IgG
Clonality:	Polyclonal
Immunogen:	The immunogen for anti-RBM8A antibody: synthetic peptide directed towards the N terminal of human RBM8A. Synthetic peptide located within the following region: LHEAGGEDFAMDEDGDESIHKLKEKAKKRKGRGFGSEEGSRARMREDYDS
Formulation:	Liquid. Purified antibody supplied in 1x PBS buffer with 0.09% (w/v) sodium azide and 2% sucrose. <i>Note that this product is shipped as lyophilized powder to China customers.</i>
Purification:	Protein A purified
Conjugation:	Unconjugated
Storage:	Store at -20°C as received.
Stability:	Stable for 12 months from date of receipt.
Predicted Protein Size:	19 kDa
Gene Name:	RNA binding motif protein 8A
Database Link:	NP_005096 Entrez Gene 9939 Human Q9Y5S9



[View online »](#)

Background:

RBM8A is a protein with a conserved RNA-binding motif. The protein is found predominantly in the nucleus, although it is also present in the cytoplasm. It is preferentially associated with mRNAs produced by splicing, including both nuclear mRNAs and newly exported cytoplasmic mRNAs. It is thought that the protein remains associated with spliced mRNAs as a tag to indicate where introns had been present, thus coupling pre- and post-mRNA splicing events. This gene encodes a protein with a conserved RNA-binding motif. The protein is found predominantly in the nucleus, although it is also present in the cytoplasm. It is preferentially associated with mRNAs produced by splicing, including both nuclear mRNAs and newly exported cytoplasmic mRNAs. It is thought that the protein remains associated with spliced mRNAs as a tag to indicate where introns had been present, thus coupling pre- and post-mRNA splicing events. Previously, it was thought that two genes encode this protein, RBM8A and RBM8B; it is now thought that the RBM8B locus is a pseudogene. Two alternative start codons result in two forms of the protein, and this gene also uses multiple polyadenylation sites.

Synonyms:

BOV-1A; BOV-1B; BOV-1C; C1DELq21.1; DEL1q21.1; MDS014; RBM8; RBM8B; TAR; Y14; ZNRP; ZRNP1

Note:

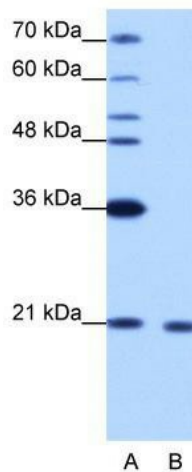
Immunogen Sequence Homology: Dog: 100%; Rat: 100%; Horse: 100%; Human: 100%; Mouse: 100%; Bovine: 100%; Zebrafish: 100%; Pig: 82%; Rabbit: 82%

Protein Families:

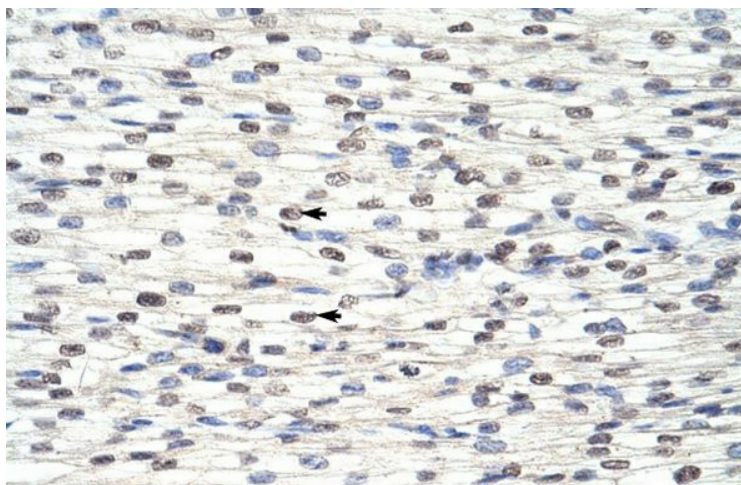
Druggable Genome

Protein Pathways:

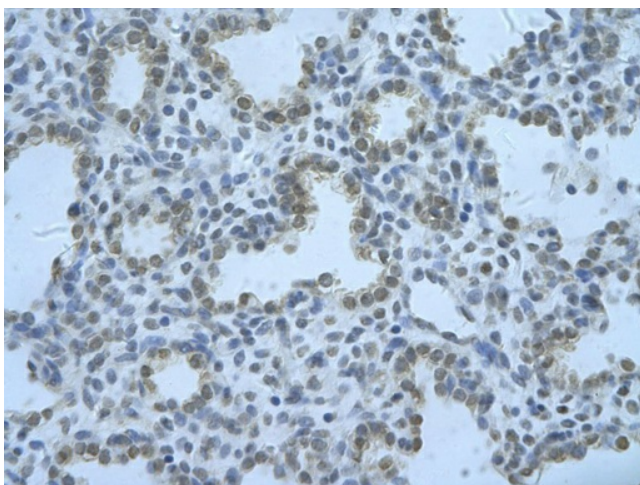
Spliceosome

Product images:

WB Suggested Anti-RBM8A Antibody Titration: 1.25 ug/ml; Positive Control: Jurkat cell lysate
There is BioGPS gene expression data showing that RBM8A is expressed in Jurkat



Rabbit Anti-RBM8A Antibody; Paraffin Embedded Tissue: Human Heart; Cellular Data: Myocardial cells; Antibody Concentration: 4.0-8.0 ug/ml; Magnification: 400X



Rabbit Anti-RBM8A Antibody; Paraffin Embedded Tissue: Human alveolar cell; Cellular Data: Epithelial cells of renal tubule; Antibody Concentration: 4.0-8.0 ug/ml; Magnification: 400X