

## Product datasheet for **TA345909**

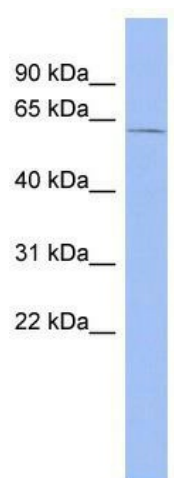
### ZRSR2 Rabbit Polyclonal Antibody

#### Product data:

Product Type:	Primary Antibodies
Applications:	WB
Recommended Dilution:	WB
Reactivity:	Human
Host:	Rabbit
Isotype:	IgG
Clonality:	Polyclonal
Immunogen:	The immunogen for anti-ZRSR2 antibody: synthetic peptide directed towards the N terminal of human ZRSR2. Synthetic peptide located within the following region: LKEQWEEQQRKEREEEEQKRQEKKKEEALQKMLDQAENELENGTTWQNP
Formulation:	Liquid. Purified antibody supplied in 1x PBS buffer with 0.09% (w/v) sodium azide and 2% sucrose. <i>Note that this product is shipped as lyophilized powder to China customers.</i>
Purification:	Affinity Purified
Conjugation:	Unconjugated
Storage:	Store at -20°C as received.
Stability:	Stable for 12 months from date of receipt.
Predicted Protein Size:	58 kDa
Gene Name:	zinc finger CCCH-type, RNA binding motif and serine/arginine rich 2
Database Link:	<a href="#">NP_005080</a> <a href="#">Entrez Gene 8233 Human</a> <a href="#">Q15696</a>
Background:	ZRSR2 is an essential splicing factor. The protein associates with the U2 auxiliary factor heterodimer, which is required for the recognition of a functional 3' splice site in pre-mRNA splicing, and may play a role in network interactions during spliceosome
Synonyms:	U2AF1-RS2; U2AF1L2; U2AF1RS2; URP
Note:	Immunogen Sequence Homology: Rat: 100%; Horse: 100%; Human: 100%; Mouse: 100%; Dog: 93%; Pig: 93%; Bovine: 93%; Rabbit: 93%; Zebrafish: 85%; Yeast: 83%



[View online »](#)

**Product images:**

WB Suggested Anti-ZRSR2 Antibody Titration: 0.2-1 ug/ml; ELISA Titer: 1: 12500; Positive Control: Human Spleen