

Product datasheet for **TA345908**

ZRSR2 Rabbit Polyclonal Antibody

Product data:

Product Type:	Primary Antibodies
Applications:	IHC, WB
Recommended Dilution:	WB, IHC
Reactivity:	Human
Host:	Rabbit
Isotype:	IgG
Clonality:	Polyclonal
Immunogen:	The immunogen for anti-ZRSR2 antibody: synthetic peptide directed towards the C terminal of human ZRSR2. Synthetic peptide located within the following region: HHDDYYSRLRGRRNPSPDHSYKRNGESERKSSRHRGKKSHKRTSKSRERH
Formulation:	Liquid. Purified antibody supplied in 1x PBS buffer with 0.09% (w/v) sodium azide and 2% sucrose.
Purification:	Protein A purified
Conjugation:	Unconjugated
Storage:	Store at -20°C as received.
Stability:	Stable for 12 months from date of receipt.
Predicted Protein Size:	53 kDa
Gene Name:	zinc finger CCCH-type, RNA binding motif and serine/arginine rich 2
Database Link:	NP_005080 Entrez Gene 8233 Human Q15696



[View online »](#)

Background:

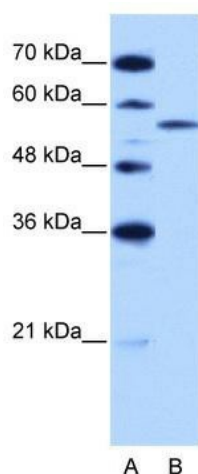
ZRSR2 is an essential splicing factor. The protein associates with the U2 auxiliary factor heterodimer, which is required for the recognition of a functional 3' splice site in pre-mRNA splicing, and may play a role in network interactions during spliceosome assembly. This gene encodes U2AF small subunit related protein 2 which is an essential splicing factor. This protein is associated with the U2AF heterodimer composed of a large and a small subunit. It specifically interacts with the large subunit through an U2AF small subunit homologous region, and with SR proteins through its RS domain. This protein and U2AF small subunit are not functionally redundant.

Synonyms:

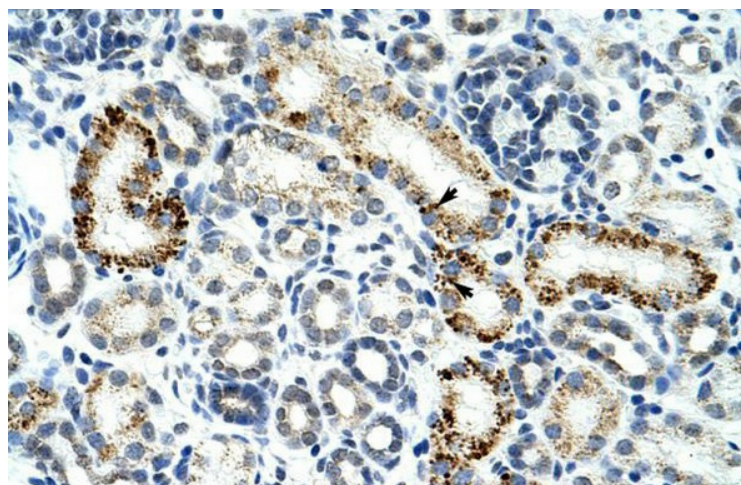
U2AF1-RS2; U2AF1L2; U2AF1RS2; URP

Note:

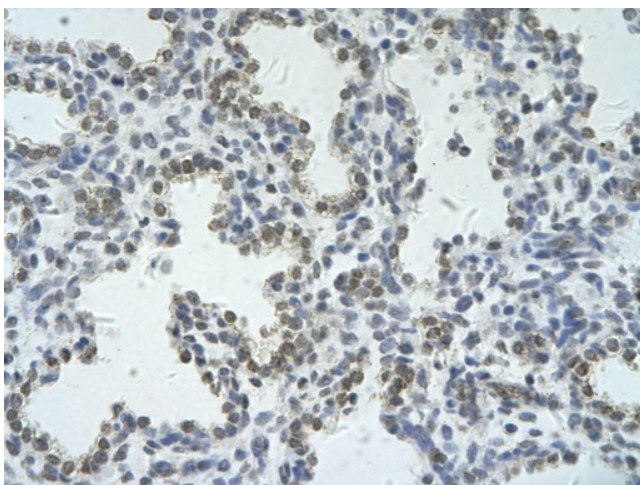
Immunogen Sequence Homology: Pig: 100%; Human: 100%; Rabbit: 100%; Guinea pig: 100%; Rat: 93%; Dog: 92%; Mouse: 90%; Bovine: 83%; Horse: 79%

Product images:


WB Suggested Anti-ZRSR2 Antibody Titration: 2.5 ug/ml; Positive Control: HepG2 cell lysate



Rabbit Anti-ZRSR2 Antibody; Paraffin Embedded Tissue: Human Kidney; Cellular Data: Epithelial cells of renal tubule; Antibody Concentration: 4.0-8.0 ug/ml; Magnification: 400X



Rabbit Anti-ZRSR2 Antibody; Paraffin Embedded
Tissue: Human alveolar cell; Cellular Data:
Epithelial cells of renal tubule; Antibody
Concentration: 4.0-8.0 ug/ml; Magnification: 400X