

Product datasheet for **TA345907**

SFPQ Rabbit Polyclonal Antibody

Product data:

Product Type:	Primary Antibodies
Applications:	IHC, WB
Recommended Dilution:	WB, IHC
Reactivity:	Human
Host:	Rabbit
Isotype:	IgG
Clonality:	Polyclonal
Immunogen:	The immunogen for anti-SFPQ antibody: synthetic peptide directed towards the N terminal of human SFPQ. Synthetic peptide located within the following region: VPGPGPGPKQGPGPGPKGGKMPGGPKPGGGPGLSTPGGHPKPPHRGGGE
Formulation:	Liquid. Purified antibody supplied in 1x PBS buffer with 0.09% (w/v) sodium azide and 2% sucrose. <i>Note that this product is shipped as lyophilized powder to China customers.</i>
Purification:	Protein A purified
Conjugation:	Unconjugated
Storage:	Store at -20°C as received.
Stability:	Stable for 12 months from date of receipt.
Predicted Protein Size:	78 kDa
Gene Name:	splicing factor proline/glutamine-rich
Database Link:	NP_005057 Entrez Gene 6421 Human P23246



[View online »](#)

Background:

SFPQ is DNA- and RNA binding protein. It is essential pre-mRNA splicing factor required early in spliceosome formation and for splicing catalytic step II, probably as a heteromer with NONO. It binds to pre-mRNA in spliceosome C complex, and specifically binds to intronic polypyrimidine tracts. It interacts with U5 snRNA. It may be involved in a pre-mRNA coupled splicing and polyadenylation process as component of a snRNP-free complex with SNRPA/U1A. SFPQ may be involved in homologous DNA pairing. SFPQ is involved in transcriptional regulation. It binds the DNA sequence 5'-CTGAGTC-3' in the insulin-like growth factor response element (IGFRE) and inhibits IGF-I-stimulated transcriptional activity.

Synonyms:

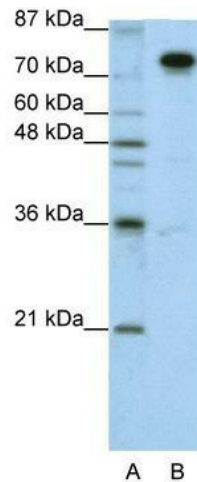
POMP100; PPP1R140; PSF

Note:

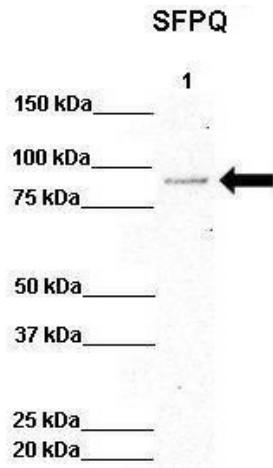
Immunogen Sequence Homology: Dog: 100%; Human: 100%; Bovine: 100%; Rat: 79%; Mouse: 79%

Protein Families:

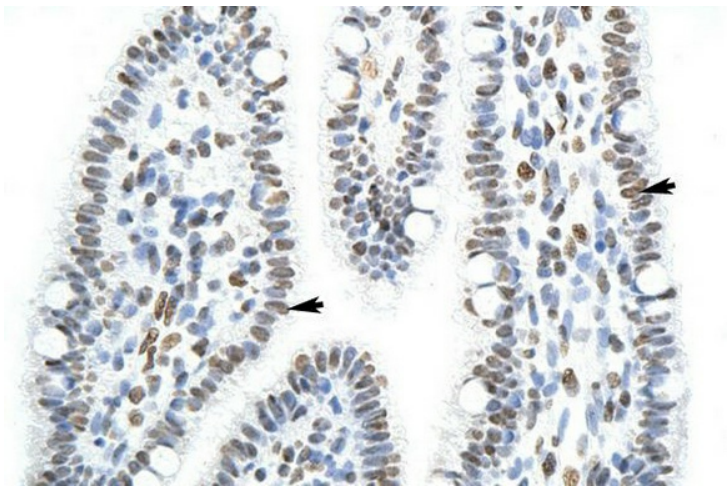
Transcription Factors

Product images:

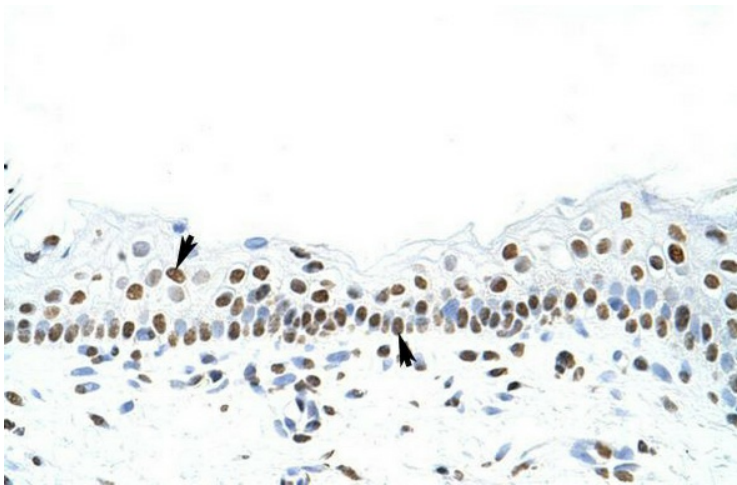
WB Suggested Anti-SFPQ Antibody Titration: 1.25 ug/ml; ELISA Titer: 1: 12500; Positive Control: HepG2 cell lysate. SFPQ is strongly supported by BioGPS gene expression data to be expressed in HepG2



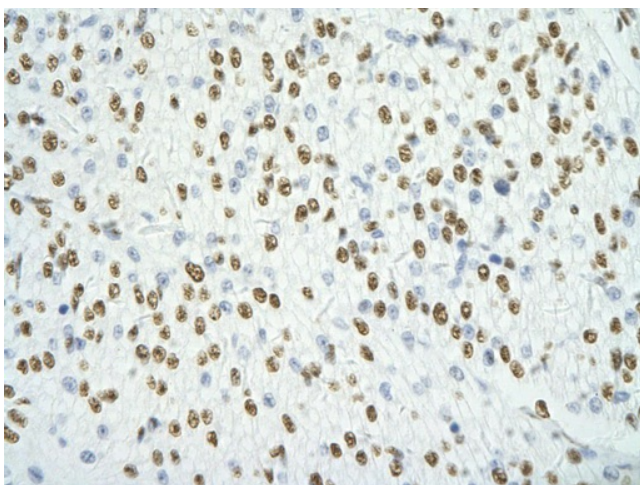
Lanes: Lane 1: 50ug HeLa Lysate; Primary Antibody Dilution: 1: 1000; Secondary Antibody: Anti-rabbit-HRP; Secondary Antibody Dilution: 1: 10, 000; Gene Name: SFPQ; Submitted by: Archa Fox, University of Western Australia; SFPQ is strongly supported by BioGPS gene expression data to be expressed in Human HeLa cells



Rabbit Anti-SFPQ Antibody; Paraffin Embedded Tissue: Human Intestine; Cellular Data: Epithelial cells of intestinal villas; Antibody Concentration: 4.0-8.0 ug/ml; Magnification: 400X



Rabbit Anti-SFPQ Antibody; Paraffin Embedded Tissue: Human Skin; Cellular Data: Squamous epithelial cells; Antibody Concentration: 4.0-8.0 ug/ml; Magnification: 400X



Rabbit Anti-SFPQ antibody; Paraffin Embedded Tissue: Human Heart cell Cellular Data: cardiac cell of renal tubule; Antibody Concentration: 4.0-8.0 ug/ml; Magnification: 400X