

Product datasheet for **TA345901**

HCC1 (RBM39) Rabbit Polyclonal Antibody

Product data:

Product Type:	Primary Antibodies
Applications:	WB
Recommended Dilution:	WB
Reactivity:	Human
Host:	Rabbit
Isotype:	IgG
Clonality:	Polyclonal
Immunogen:	The immunogen for anti-RBM39 antibody: synthetic peptide directed towards the middle region of human RBM39. Synthetic peptide located within the following region: FRGRYRSPYSGPKFNSAIRGKIGLPHSIKLSRRRSRSKSPFRKDKSPVRE
Formulation:	Liquid. Purified antibody supplied in 1x PBS buffer with 0.09% (w/v) sodium azide and 2% sucrose. <i>Note that this product is shipped as lyophilized powder to China customers.</i>
Purification:	Affinity Purified
Conjugation:	Unconjugated
Storage:	Store at -20°C as received.
Stability:	Stable for 12 months from date of receipt.
Predicted Protein Size:	20 kDa
Gene Name:	RNA binding motif protein 39
Database Link:	NP_001229528 Entrez Gene 9584 Human Q14498
Background:	RBM39 is an RNA binding protein and possible splicing factor. It is found in the nucleus, where it colocalizes with core spliceosomal proteins. Studies of a mouse protein with high sequence similarity to this protein suggest that this protein may act as a transcriptional coactivator for JUN/AP-1 and estrogen receptors.
Synonyms:	CAPER; CAPERalpha; FSAP59; HCC1; RNPC2

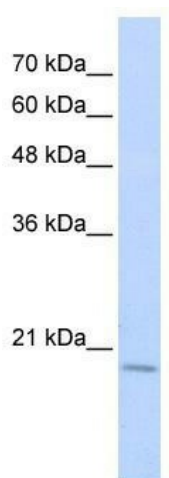


[View online »](#)

Note: Immunogen Sequence Homology: Dog: 100%; Pig: 100%; Rat: 100%; Horse: 100%; Human: 100%; Mouse: 100%; Bovine: 100%; Rabbit: 100%; Zebrafish: 91%; Guinea pig: 86%

Protein Families: Transcription Factors

Product images:



WB Suggested Anti-RBM39 Antibody Titration:
0.2-1 ug/ml; ELISA Titer: 1: 312500; Positive
Control: Transfected 293T