

## Product datasheet for **TA345899**

### EIF4EL3 (EIF4E2) Rabbit Polyclonal Antibody

#### Product data:

Product Type:	Primary Antibodies
Applications:	IHC, WB
Recommended Dilution:	WB, IHC
Reactivity:	Human
Host:	Rabbit
Isotype:	IgG
Clonality:	Polyclonal
Immunogen:	The immunogen for anti-EIF4E2 antibody: synthetic peptide directed towards the N terminal of human EIF4E2. Synthetic peptide located within the following region: KDDDSGDHDQNEENSTQKDGEKEKTERDKNQSSSKRKAVVPGPAEHPLQY
Formulation:	Liquid. Purified antibody supplied in 1x PBS buffer with 0.09% (w/v) sodium azide and 2% sucrose. <i>Note that this product is shipped as lyophilized powder to China customers.</i>
Purification:	Protein A purified
Conjugation:	Unconjugated
Storage:	Store at -20°C as received.
Stability:	Stable for 12 months from date of receipt.
Predicted Protein Size:	27 kDa
Gene Name:	eukaryotic translation initiation factor 4E family member 2
Database Link:	<a href="#">NP_004837</a> <a href="#">Entrez Gene 9470 Human</a> <a href="#">O60573</a>
Background:	EIF4E2 belongs to the eukaryotic initiation factor 4E family. It recognizes and binds the 7-methylguanosine-containing mRNA cap during an early step in the initiation of protein synthesis and facilitates ribosome binding by inducing the unwinding of the mRNAs secondary structures.
Synonyms:	4E-LP; 4EHP; EIF4EL3; IF4e



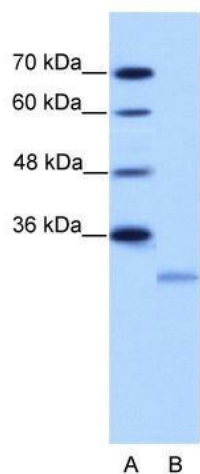
[View online »](#)

**Note:** Immunogen Sequence Homology: Human: 100%; Dog: 93%; Pig: 93%; Rat: 93%; Bovine: 93%; Guinea pig: 93%; Horse: 86%; Mouse: 86%; Rabbit: 79%

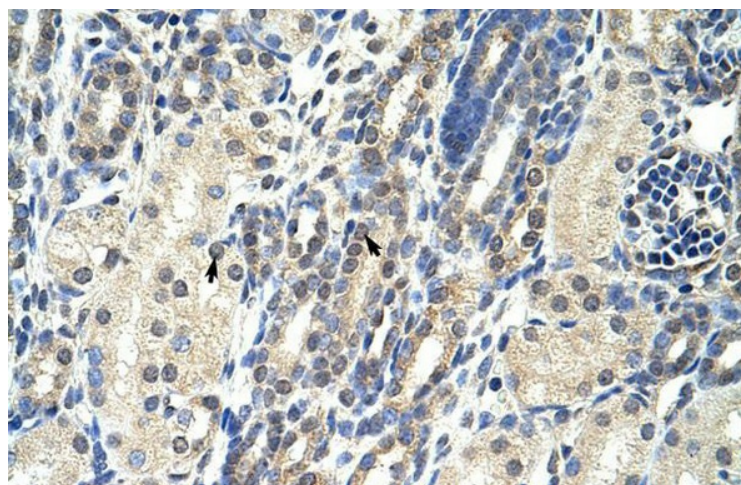
**Protein Families:** Transcription Factors

**Protein Pathways:** Insulin signaling pathway, mTOR signaling pathway

**Product images:**



WB Suggested Anti-EIF4E2 Antibody Titration: 2.5 ug/ml; Positive Control: HepG2 cell lysate; There is BioGPS gene expression data showing that EIF4E2 is expressed in HepG2



Rabbit Anti-EIF4E2 Antibody; Paraffin Embedded Tissue: Human Kidney; Cellular Data: Epithelial cells of renal tubule; Antibody Concentration: 4.0-8.0 ug/ml; Magnification: 400