

Product datasheet for **TA345898**

SFRS11 (SRSF11) Rabbit Polyclonal Antibody

Product data:

Product Type:	Primary Antibodies
Applications:	WB
Recommended Dilution:	WB
Reactivity:	Human
Host:	Rabbit
Isotype:	IgG
Clonality:	Polyclonal
Immunogen:	The immunogen for anti-SFRS11 antibody: synthetic peptide directed towards the C terminal of human SFRS11. Synthetic peptide located within the following region: KKKSKDKEKDRERKSESDKDKVQVTRDYDEEEQGYDSEKEKKEEKPIET
Formulation:	Liquid. Purified antibody supplied in 1x PBS buffer with 0.09% (w/v) sodium azide and 2% sucrose. <i>Note that this product is shipped as lyophilized powder to China customers.</i>
Purification:	Affinity Purified
Conjugation:	Unconjugated
Storage:	Store at -20°C as received.
Stability:	Stable for 12 months from date of receipt.
Predicted Protein Size:	53 kDa
Gene Name:	serine/arginine-rich splicing factor 11
Database Link:	NP_004759 Entrez Gene 9295 Human Q05519



[View online »](#)

Background:

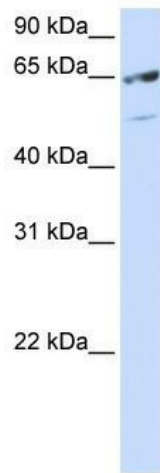
SFRS11 is 54-kD nuclear protein that contains an arginine/serine-rich region similar to segments found in pre-mRNA splicing factors. Although the function of this protein is not yet known, structure and immunolocalization data suggest that it may play a role in pre-mRNA processing. This gene encodes 54-kD nuclear protein that contains an arginine/serine-rich region similar to segments found in pre-mRNA splicing factors. Although the function of this protein is not yet known, structure and immunolocalization data suggest that it may play a role in pre-mRNA processing.

Synonyms:

dj677H15.2; NET2; p54; SFRS11

Note:

Immunogen Sequence Homology: Dog: 100%; Rat: 100%; Horse: 100%; Human: 100%; Pig: 93%; Mouse: 93%; Bovine: 93%

Product images:

WB Suggested Anti-SFRS11 Antibody Titration: 0.2-1 ug/ml; ELISA Titer: 1: 62500; Positive Control: Hela cell lysate; There is BioGPS gene expression data showing that SRSF11 is expressed in Hela