

Product datasheet for **TA345897**

EMAP II (AIMP1) Rabbit Polyclonal Antibody

Product data:

Product Type:	Primary Antibodies
Applications:	WB
Recommended Dilution:	WB
Reactivity:	Human
Host:	Rabbit
Isotype:	IgG
Clonality:	Polyclonal
Immunogen:	The immunogen for anti-SCYE1 antibody: synthetic peptide directed towards the middle region of human SCYE1. Synthetic peptide located within the following region: GTKEQIKGGTGDEKKAKEKIEKKGEKKEKKQQSIAGSADSKPIDVSRDL
Formulation:	Liquid. Purified antibody supplied in 1x PBS buffer with 0.09% (w/v) sodium azide and 2% sucrose. <i>Note that this product is shipped as lyophilized powder to China customers.</i>
Purification:	Affinity Purified
Conjugation:	Unconjugated
Storage:	Store at -20°C as received.
Stability:	Stable for 12 months from date of receipt.
Predicted Protein Size:	34 kDa
Gene Name:	aminoacyl tRNA synthetase complex interacting multifunctional protein 1
Database Link:	NP_004748 Entrez Gene 9255 Human Q12904



[View online »](#)

Background:

SCYE1 is a cytokine that is specifically induced by apoptosis. The release of this cytokine renders the tumor-associated vasculature sensitive to tumor necrosis factor. The precursor of SCYE1 (pro-SCYE1) is identical to the p43 subunit, which is associated with the multi-tRNA synthetase complex. Therefore, pro-SCYE1 may function in binding RNA as part of the tRNA synthetase complex in normal cells and in stimulating inflammatory responses after proteolytic cleavage in tumor cells. The protein encoded by this gene is a cytokine that is specifically induced by apoptosis. The release of this cytokine renders the tumor-associated vasculature sensitive to tumor necrosis factor. The precursor of SCYE1 (pro-SCYE1) is identical to the p43 subunit, which is associated with the multi-tRNA synthetase complex. Therefore, pro-SCYE1 may function in binding RNA as part of the tRNA synthetase complex in normal cells and in stimulating inflammatory responses after proteolytic cleavage in tumor cells. Publication Note: This RefSeq record includes a subset of the publications that are available for this gene. Please see the Entrez Gene record to access additional publications.

Synonyms:

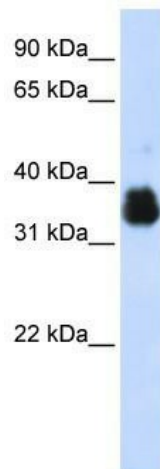
EMAP2; EMAPII; HLD3; p43; SCYE1

Note:

Immunogen Sequence Homology: Human: 100%; Rabbit: 100%; Pig: 93%; Rat: 93%; Horse: 93%; Bovine: 93%; Mouse: 92%; Zebrafish: 92%; Dog: 86%; Yeast: 86%

Protein Families:

Druggable Genome

Product images:

WB Suggested Anti-SCYE1 Antibody Titration: 0.2-1 ug/ml; ELISA Titer: 1: 1562500; Positive Control: 293T cell lysate; AIMP1 is strongly supported by BioGPS gene expression data to be expressed in Human HEK293T cells