

## Product datasheet for **TA345892**

### **PABP2 (PABPN1) Rabbit Polyclonal Antibody**

#### **Product data:**

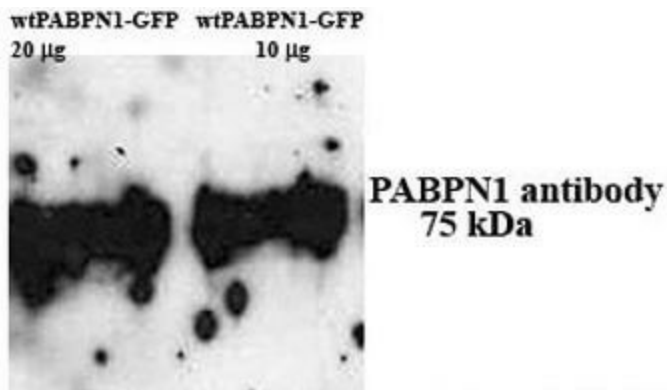
<b>Product Type:</b>	Primary Antibodies
<b>Applications:</b>	IF, WB
<b>Recommended Dilution:</b>	WB, ICC
<b>Reactivity:</b>	Mouse
<b>Host:</b>	Rabbit
<b>Isotype:</b>	IgG
<b>Clonality:</b>	Polyclonal
<b>Immunogen:</b>	The immunogen for anti-PABPN1 antibody: synthetic peptide directed towards the N terminal of human PABPN1. Synthetic peptide located within the following region: MAAAAAAAAAAGAAGGRGSGPGRRRHLVPGAGGEAGEGAPGGAGDYGNGL
<b>Formulation:</b>	Liquid. Purified antibody supplied in 1x PBS buffer with 0.09% (w/v) sodium azide and 2% sucrose.
<b>Purification:</b>	Affinity Purified
<b>Conjugation:</b>	Unconjugated
<b>Storage:</b>	Store at -20°C as received.
<b>Stability:</b>	Stable for 12 months from date of receipt.
<b>Predicted Protein Size:</b>	33 kDa
<b>Gene Name:</b>	poly(A) binding protein nuclear 1
<b>Database Link:</b>	<a href="#">NP_004634</a> <a href="#">Entrez Gene 54196 Mouse</a> <a href="#">Q86U42</a>
<b>Background:</b>	This gene encodes an abundant nuclear protein that binds with high affinity to nascent poly(A) tails. The protein is required for progressive and efficient polymerization of poly(A) tails on the 3' ends of eukaryotic genes and controls the size of the pol
<b>Synonyms:</b>	OPMD; PAB2; PABII; PABP-2; PABP2
<b>Note:</b>	Immunogen Sequence Homology: Dog: 100%; Pig: 100%; Human: 100%; Bovine: 100%; Rabbit: 100%; Guinea pig: 100%; Rat: 93%; Mouse: 93%



[View online »](#)

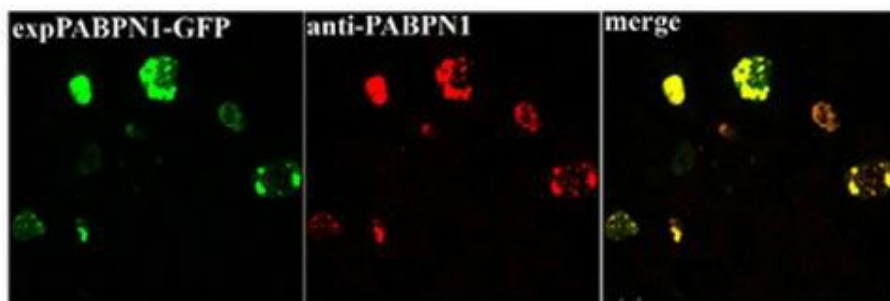
Protein Families: Druggable Genome

**Product images:**



PABPN1 antibody - N-terminal region validated by WB using C2C12 myoblast cell line at 1.25 ug/ml.

**Figure 1: Western blot analysis of PABPN1.**



Sample Type: C2C12 myoblast cell line

**Figure 3: Confocal images showing co-localization of expPABPN1-GFP with PABPN1.**