

Product datasheet for **TA345889**

RO60 Rabbit Polyclonal Antibody

Product data:

Product Type:	Primary Antibodies
Applications:	IHC, WB
Recommended Dilution:	WB, IHC
Reactivity:	Human
Host:	Rabbit
Isotype:	IgG
Clonality:	Polyclonal
Immunogen:	The immunogen for anti-TROVE2 antibody: synthetic peptide directed towards the N terminal of human TROVE2. Synthetic peptide located within the following region: QDGYVWQVTD MNRLHRFLCFGSEG GTYYIKEQKLGLENAEALIRLIEDGR
Formulation:	Liquid. Purified antibody supplied in 1x PBS buffer with 0.09% (w/v) sodium azide and 2% sucrose. <i>Note that this product is shipped as lyophilized powder to China customers.</i>
Purification:	Affinity Purified
Conjugation:	Unconjugated
Storage:	Store at -20°C as received.
Stability:	Stable for 12 months from date of receipt.
Predicted Protein Size:	58 kDa
Gene Name:	TROVE domain family member 2
Database Link:	NP_001035828 Entrez Gene 6738 Human P10155
Background:	TROVE2 belongs to the Ro 60 kDa family. It is RNA-binding protein that binds to several small cytoplasmic RNA molecules known as Y RNAs. It may stabilize these RNAs from degradation.
Synonyms:	RO60; RORN; SSA2
Note:	Immunogen Sequence Homology: Dog: 100%; Pig: 100%; Rat: 100%; Human: 100%; Mouse: 100%; Rabbit: 100%; Guinea pig: 100%; Horse: 93%; Bovine: 93%

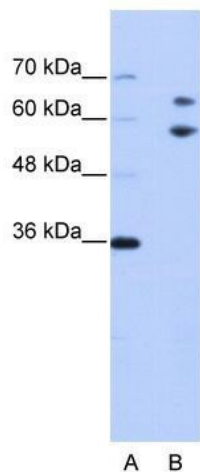


[View online »](#)

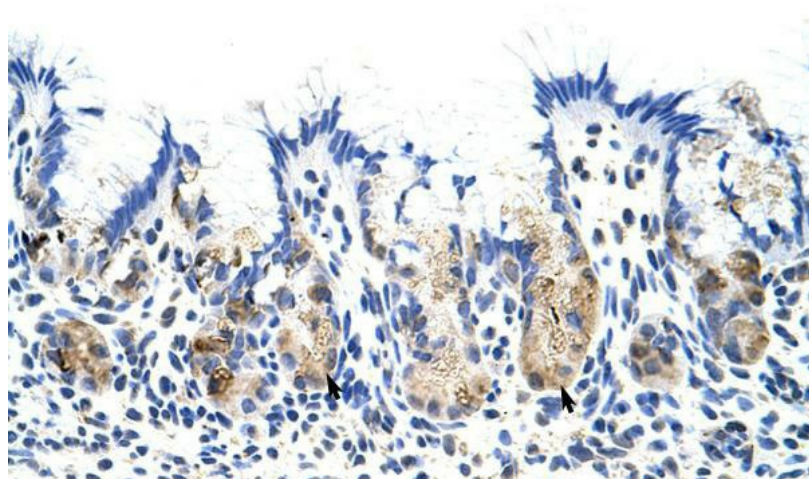
Protein Families: Transcription Factors

Protein Pathways: Systemic lupus erythematosus

Product images:



WB Suggested Anti-TROVE2 Antibody Titration:
0.2-1 ug/ml; ELISA Titer: 1: 312500; Positive
Control: Jurkat cell lysate



Rabbit Anti-TROVE2 Antibody; Paraffin Embedded
Tissue: Human Stomach; Cellular Data: Epithelial
cells of fundic gland; Antibody Concentration: 4.0-
8.0 ug/ml; Magnification: 400X