

## Product datasheet for **TA345888**

### RO60 Rabbit Polyclonal Antibody

#### Product data:

Product Type:	Primary Antibodies
Applications:	IHC, WB
Recommended Dilution:	WB, IHC
Reactivity:	Human
Host:	Rabbit
Isotype:	IgG
Clonality:	Polyclonal
Immunogen:	The immunogen for anti-TROVE2 antibody: synthetic peptide directed towards the N terminal of human TROVE2. Synthetic peptide located within the following region: QKLGLENAEALIRLIEDGRGCEVIQEIKSFSQEGRTTKQEPMLFALAICS
Formulation:	Liquid. Purified antibody supplied in 1x PBS buffer with 0.09% (w/v) sodium azide and 2% sucrose. <i>Note that this product is shipped as lyophilized powder to China customers.</i>
Purification:	Protein A purified
Conjugation:	Unconjugated
Storage:	Store at -20°C as received.
Stability:	Stable for 12 months from date of receipt.
Predicted Protein Size:	58 kDa
Gene Name:	TROVE domain family member 2
Database Link:	<a href="#">NP_001035828</a> <a href="#">Entrez Gene 6738 Human</a> <a href="#">P10155</a>
Background:	As a RNA-binding protein, TROVE2 binds to several small cytoplasmic RNA molecules known as Y RNAs. It may stabilize these RNAs from degradation.
Synonyms:	RO60; RORN; SSA2
Note:	Immunogen Sequence Homology: Human: 100%; Dog: 93%; Pig: 93%; Rat: 93%; Mouse: 93%; Bovine: 93%; Rabbit: 93%; Guinea pig: 93%; Horse: 86%

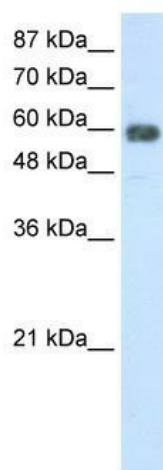


[View online »](#)

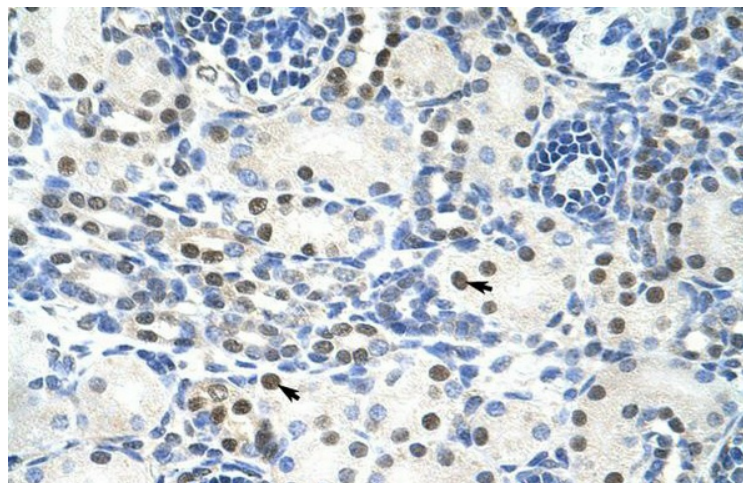
Protein Families: Transcription Factors

Protein Pathways: Systemic lupus erythematosus

### Product images:



WB Suggested Anti-TROVE2 Antibody Titration: 2.5 ug/ml; Positive Control: HepG2 cell lysate



Rabbit Anti-TROVE2 Antibody; Paraffin Embedded Tissue: Human Kidney; Cellular Data: Epithelial cells of renal tubule; Antibody Concentration: 4.0-8.0 ug/ml; Magnification: 400X