

Product datasheet for **TA345887**

SNRPD2 Rabbit Polyclonal Antibody

Product data:

Product Type:	Primary Antibodies
Applications:	WB
Recommended Dilution:	WB
Reactivity:	Human
Host:	Rabbit
Isotype:	IgG
Clonality:	Polyclonal
Immunogen:	The immunogen for anti-SNRPD2 antibody: synthetic peptide directed towards the middle region of human SNRPD2. Synthetic peptide located within the following region: ENVKEMWTEVPKSGKGGKSKPVNKDRYISKMFLRGDSVIVLRNPLIAG
Formulation:	Liquid. Purified antibody supplied in 1x PBS buffer with 0.09% (w/v) sodium azide and 2% sucrose. <i>Note that this product is shipped as lyophilized powder to China customers.</i>
Purification:	Affinity Purified
Conjugation:	Unconjugated
Storage:	Store at -20°C as received.
Stability:	Stable for 12 months from date of receipt.
Predicted Protein Size:	13 kDa
Gene Name:	small nuclear ribonucleoprotein D2 polypeptide
Database Link:	NP_004588 Entrez Gene 6633 Human P62316
Background:	SNRPD2 belongs to the small nuclear ribonucleoprotein core protein family. It is required for pre-mRNA splicing and small nuclear ribonucleoprotein biogenesis. The protein encoded by this gene belongs to the small nuclear ribonucleoprotein core protein family. It is required for pre-mRNA splicing and small nuclear ribonucleoprotein biogenesis. Alternative splicing occurs at this locus and two transcript variants encoding the same protein have been identified.
Synonyms:	Sm-D2; SMD2; SNRPD1



[View online »](#)

Note: Immunogen Sequence Homology: Dog: 100%; Pig: 100%; Rat: 100%; Horse: 100%; Human: 100%; Mouse: 100%; Bovine: 100%; Rabbit: 100%; Zebrafish: 100%; Guinea pig: 100%; Goat: 86%

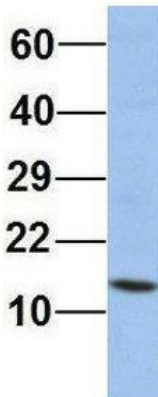
Protein Pathways: Spliceosome

Product images:



WB Suggested Anti-SNRPD2 Antibody Titration: 0.2-1 ug/ml; ELISA Titer: 1: 1562500; Positive Control: HepG2 cell lysate

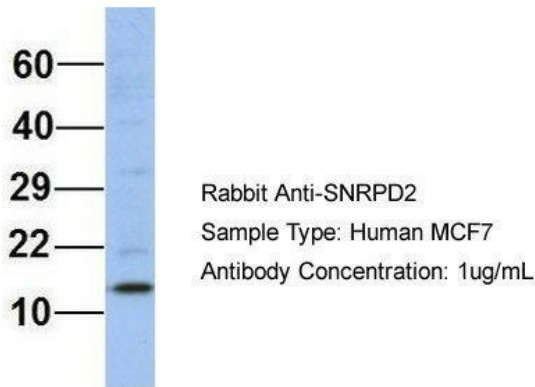
SNRPD2



Rabbit Anti-SNRPD2
 Sample Type: Human Jurkat
 Antibody Concentration: 1ug/mL

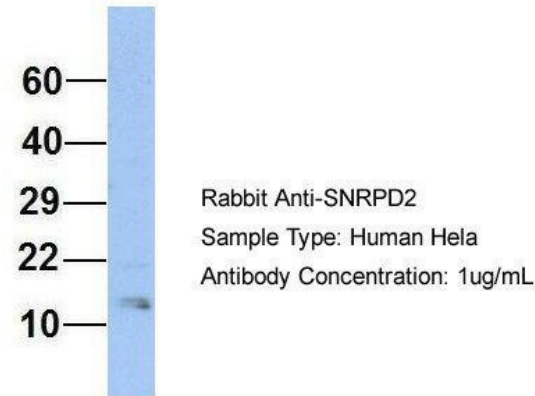
Host: Rabbit; Target Name: SNRPD2; Sample Tissue: Human Jurkat; Antibody Dilution: 1.0 ug/ml; SNRPD2 is supported by BioGPS gene expression data to be expressed in Jurkat

SNRPD2



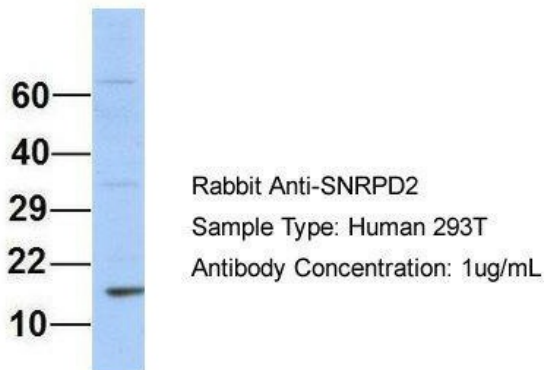
Host: Rabbit; Target Name: SNRPD2; Sample Tissue: Human MCF7; Antibody Dilution: 1.0 ug/ml; SNRPD2 is supported by BioGPS gene expression data to be expressed in MCF7

SNRPD2



Host: Rabbit; Target Name: SNRPD2; Sample Tissue: Human HeLa; Antibody Dilution: 1.0 ug/ml; SNRPD2 is supported by BioGPS gene expression data to be expressed in HeLa

SNRPD2



Host: Rabbit; Target Name: SNRPD2; Sample Tissue: Human 293T; Antibody Dilution: 1.0 ug/ml; SNRPD2 is supported by BioGPS gene expression data to be expressed in HEK293T