

Product datasheet for **TA345886**

SNRPD2 Rabbit Polyclonal Antibody

Product data:

Product Type:	Primary Antibodies
Applications:	WB
Recommended Dilution:	WB
Reactivity:	Human
Host:	Rabbit
Isotype:	IgG
Clonality:	Polyclonal
Immunogen:	The immunogen for anti-SNRPD2 antibody: synthetic peptide directed towards the N terminal of human SNRPD2. Synthetic peptide located within the following region: MSLLNKPKSEMTPEELQKREEEEFNTGPLSVLTQSVKNNTQVLINCRNNK
Formulation:	Liquid. Purified antibody supplied in 1x PBS buffer with 0.09% (w/v) sodium azide and 2% sucrose. <i>Note that this product is shipped as lyophilized powder to China customers.</i>
Purification:	Affinity Purified
Conjugation:	Unconjugated
Storage:	Store at -20°C as received.
Stability:	Stable for 12 months from date of receipt.
Predicted Protein Size:	13 kDa
Gene Name:	small nuclear ribonucleoprotein D2 polypeptide
Database Link:	NP_004588 Entrez Gene 6633 Human P62316

Background: SNRPD2 belongs to the small nuclear ribonucleoprotein core protein family. It is required for pre-mRNA splicing and small nuclear ribonucleoprotein biogenesis. Multiple transcript variants encoding different isoforms have been found for this gene. The protein encoded by this gene belongs to the small nuclear ribonucleoprotein core protein family. It is required for pre-mRNA splicing and small nuclear ribonucleoprotein biogenesis. Alternative splicing occurs at this locus and two transcript variants encoding the same protein have been identified.



[View online »](#)

Synonyms: Sm-D2; SMD2; SNRPD1

Note: Immunogen Sequence Homology: Dog: 100%; Pig: 100%; Rat: 100%; Horse: 100%; Human: 100%; Mouse: 100%; Bovine: 100%; Rabbit: 100%; Zebrafish: 100%; Guinea pig: 100%; Yeast: 77%

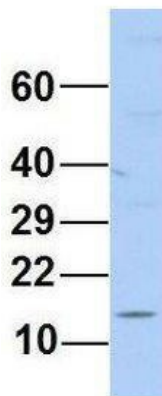
Protein Pathways: Spliceosome

Product images:



WB Suggested Anti-SNRPD2 Antibody Titration: 0.2-1 ug/ml; ELISA Titer: 1: 312500; Positive Control: Jurkat cell lysate; SNRPD2 is supported by BioGPS gene expression data to be expressed in Jurkat

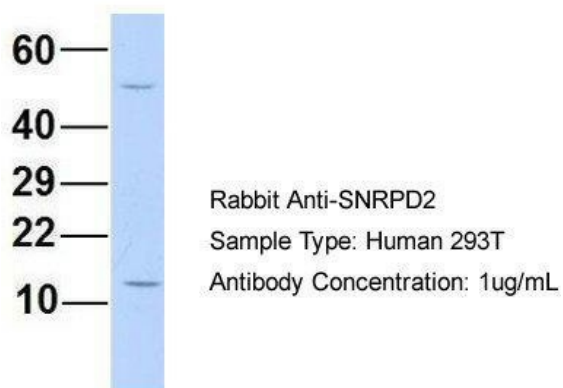
SNRPD2



Rabbit Anti-SNRPD2
 Sample Type: Human MCF7
 Antibody Concentration: 1ug/mL

Host: Rabbit; Target Name: SNRPD2; Sample Tissue: Human MCF7; Antibody Dilution: 1.0 ug/ml; SNRPD2 is supported by BioGPS gene expression data to be expressed in MCF7

SNRPD2



Host: Rabbit; Target Name: SNRPD2; Sample Tissue: Human 293T; Antibody Dilution: 1.0 ug/ml; SNRPD2 is supported by BioGPS gene expression data to be expressed in HEK293T