

Product datasheet for **TA345885**

U1A (SNRPA) Rabbit Polyclonal Antibody

Product data:

Product Type:	Primary Antibodies
Applications:	IHC, WB
Recommended Dilution:	WB, IHC
Reactivity:	Human
Host:	Rabbit
Isotype:	IgG
Clonality:	Polyclonal
Immunogen:	The immunogen for anti-SNRPA antibody: synthetic peptide directed towards the middle region of human SNRPA. Synthetic peptide located within the following region: MPGQMPPAQPLSENPPNHILFTNLPEETNELMLSMLFNQFPGFKEVRLV
Formulation:	Liquid. Purified antibody supplied in 1x PBS buffer with 0.09% (w/v) sodium azide and 2% sucrose. <i>Note that this product is shipped as lyophilized powder to China customers.</i>
Purification:	Affinity Purified
Conjugation:	Unconjugated
Storage:	Store at -20°C as received.
Stability:	Stable for 12 months from date of receipt.
Predicted Protein Size:	31 kDa
Gene Name:	small nuclear ribonucleoprotein polypeptide A
Database Link:	NP_004587 Entrez Gene 6626 Human P09012
Background:	SNRPA binds stem loop II of U1 snRNA. It is the first snRNP to interact with pre-mRNA. This interaction is required for the subsequent binding of U2 snRNP and the U4/U6/U5 tri-snRNP. In a snRNP-free form (SF-A) may be involved in coupled pre-mRNA splicing and polyadenylation process.
Synonyms:	Mud1; U1-A; U1A



[View online »](#)

Note: Immunogen Sequence Homology: Dog: 100%; Pig: 100%; Rat: 100%; Horse: 100%; Human: 100%; Mouse: 100%; Sheep: 100%; Bovine: 100%; Rabbit: 100%; Guinea pig: 100%; Zebrafish: 85%

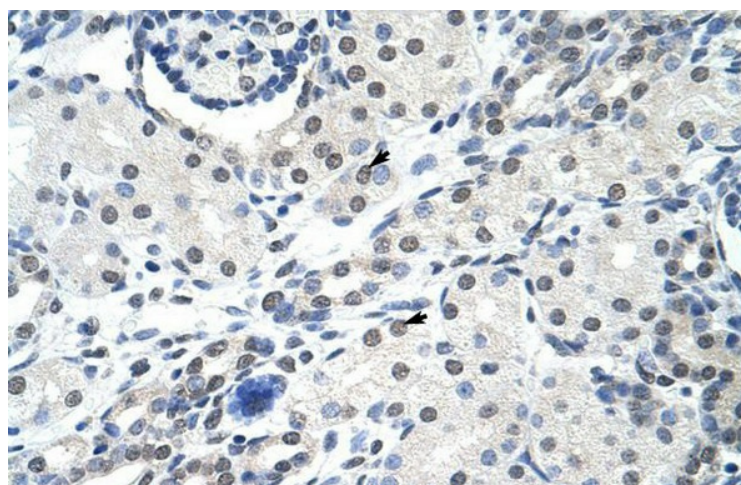
Protein Families: Stem cell - Pluripotency

Protein Pathways: Spliceosome

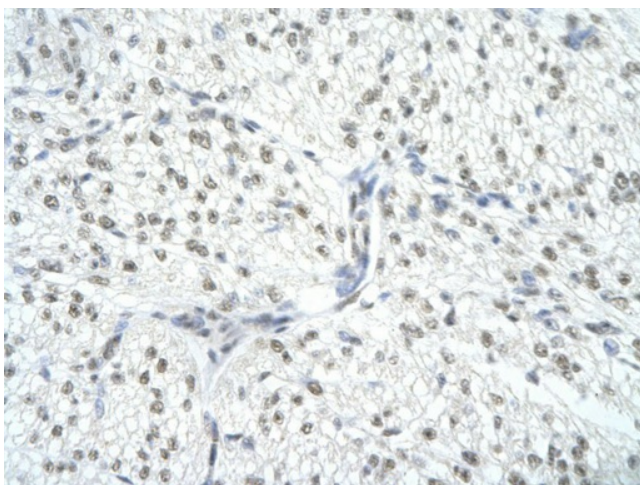
Product images:



WB Suggested Anti-SNRPA Antibody Titration: 0.2-1 ug/ml; ELISA Titer: 1: 312500; Positive Control: 293T cell lysate; SNRPA is supported by BioGPS gene expression data to be expressed in HEK293T



Rabbit Anti-SNRPA Antibody; Paraffin Embedded Tissue: Human Kidney; Cellular Data: Epithelial cells of renal tubule; Antibody Concentration: 4.0-8.0 ug/ml; Magnification: 400X



Rabbit Anti-SNRPA Antibody; Paraffin Embedded
Tissue: Human cardiac cell; Cellular Data:
Epithelial cells of renal tubule; Antibody
Concentration: 4.0-8.0 ug/ml; Magnification: 400X