

Product datasheet for **TA345883**

TRA2B Rabbit Polyclonal Antibody

Product data:

Product Type:	Primary Antibodies
Applications:	IHC, WB
Recommended Dilution:	WB, IHC
Reactivity:	Human
Host:	Rabbit
Isotype:	IgG
Clonality:	Polyclonal
Immunogen:	The immunogen for anti-SFRS10 antibody: synthetic peptide directed towards the middle region of human SFRS10. Synthetic peptide located within the following region: GVFGLSLYTTERDLREVFSKYGPIADVSIVYDQQSRRSRGFVYFENVD
Formulation:	Liquid. Purified antibody supplied in 1x PBS buffer with 0.09% (w/v) sodium azide and 2% sucrose. <i>Note that this product is shipped as lyophilized powder to China customers.</i>
Purification:	Protein A purified
Conjugation:	Unconjugated
Storage:	Store at -20°C as received.
Stability:	Stable for 12 months from date of receipt.
Predicted Protein Size:	32 kDa
Gene Name:	transformer 2 beta homolog (Drosophila)
Database Link:	NP_004584 Entrez Gene 6434 Human P62995
Background:	SFRS10 contains 1 RRM (RNA recognition motif) domain and belongs to the splicing factor SR family. It is a sequence-specific RNA-binding protein which participates in the control of pre-mRNA splicing.
Synonyms:	Htra2-beta; PPP1R156; SFRS10; SRFS10; TRA2-BETA; TRAN2B
Note:	Immunogen Sequence Homology: Dog: 100%; Pig: 100%; Rat: 100%; Horse: 100%; Human: 100%; Mouse: 100%; Bovine: 100%; Rabbit: 100%; Guinea pig: 100%; Zebrafish: 92%

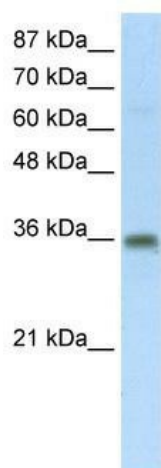


[View online »](#)

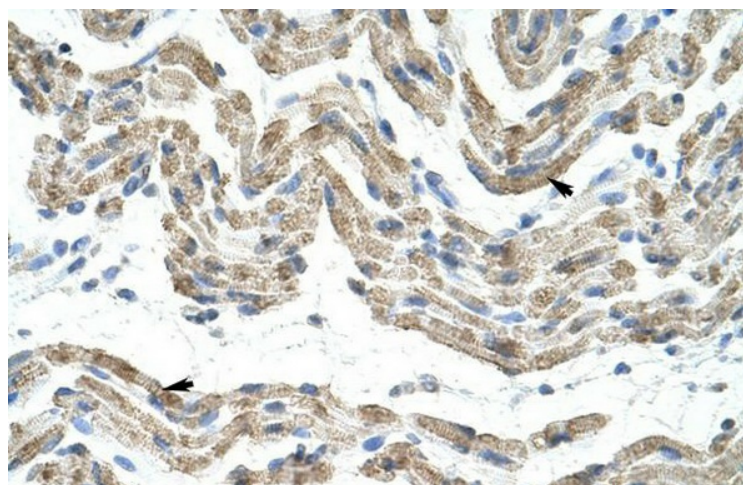
Protein Families: Druggable Genome

Protein Pathways: Spliceosome

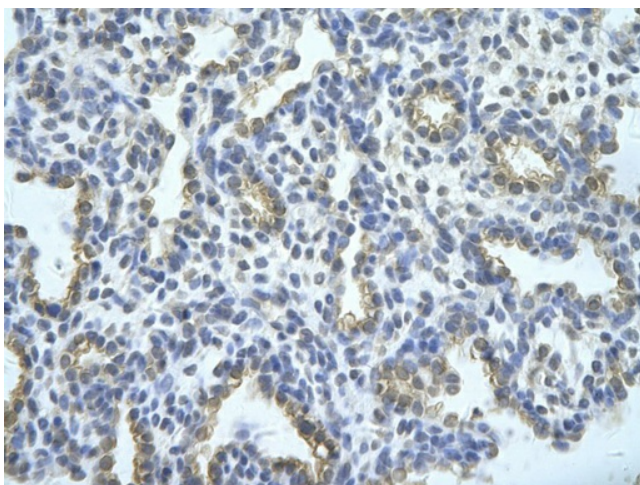
Product images:



WB Suggested Anti-SFRS10 Antibody Titration: 5.0 ug/ml; ELISA Titer: 1: 62500; Positive Control: 293T cell lysate; There is BioGPS gene expression data showing that TRA2B is expressed in HEK293T



Rabbit Anti-SFRS10 Antibody; Paraffin Embedded Tissue: Human Muscle; Cellular Data: Skeletal muscle cells; Antibody Concentration: 4.0-8.0 ug/ml; Magnification: 400X



Rabbit Anti-TRA2B Antibody; Paraffin Embedded Tissue: Human alveolar cell; Cellular Data: Epithelial cells of renal tubule; Antibody Concentration: 4.0-8.0 ug/ml; Magnification: 400X