

## Product datasheet for **TA345881**

### SFRS8 (SFSWAP) Rabbit Polyclonal Antibody

#### Product data:

Product Type:	Primary Antibodies
Applications:	WB
Recommended Dilution:	WB
Reactivity:	Human
Host:	Rabbit
Isotype:	IgG
Clonality:	Polyclonal
Immunogen:	The immunogen for anti-SFRS8 antibody: synthetic peptide directed towards the N terminal of human SFRS8. Synthetic peptide located within the following region: MYGASGGRAKPERKSGAKEEAGPGGAGGGGSRVELLVFGYACKLFRDDER
Formulation:	Liquid. Purified antibody supplied in 1x PBS buffer with 0.09% (w/v) sodium azide and 2% sucrose. <i>Note that this product is shipped as lyophilized powder to China customers.</i>
Purification:	Protein A purified
Conjugation:	Unconjugated
Storage:	Store at -20°C as received.
Stability:	Stable for 12 months from date of receipt.
Predicted Protein Size:	105 kDa
Gene Name:	splicing factor SWAP homolog
Database Link:	<a href="#">NP_004583</a> <a href="#">Entrez Gene 6433 Human</a> <a href="#">Q12872</a>
Background:	SFRS8 is a human homolog of Drosophila splicing regulatory protein. This gene encodes a human homolog of Drosophila splicing regulatory protein. This gene autoregulates its expression by control of splicing of its first two introns. In addition, it also regulates the splicing of fibronectin and CD45 genes. Multiple alternatively spliced variants have been identified. Two alternatively spliced variants have been characterized to date.
Synonyms:	SFRS8; SWAP

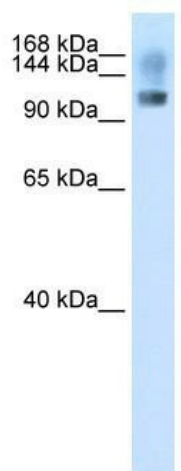


[View online »](#)

**Note:** Immunogen Sequence Homology: Human: 100%; Pig: 93%; Horse: 93%; Rabbit: 93%; Guinea pig: 93%; Dog: 86%; Mouse: 86%; Bovine: 86%; Rat: 79%

**Protein Families:** Transcription Factors

**Product images:**



WB Suggested Anti-SFRS8 Antibody Titration: 2.5 ug/ml; ELISA Titer: 1: 312500; Positive Control: Transfected 293T