

## Product datasheet for **TA345871**

### ELAVL2 Rabbit Polyclonal Antibody

#### Product data:

Product Type:	Primary Antibodies
Applications:	WB
Recommended Dilution:	WB
Reactivity:	Human
Host:	Rabbit
Isotype:	IgG
Clonality:	Polyclonal
Immunogen:	The immunogen for anti-ELAVL2 antibody: synthetic peptide directed towards the N terminal of human ELAVL2. Synthetic peptide located within the following region: METQLSNGPTCNNTANGPTTINNNCSSPVDSGNTEDSKTNLIVNYLPQNM
Formulation:	Liquid. Purified antibody supplied in 1x PBS buffer with 0.09% (w/v) sodium azide and 2% sucrose. <i>Note that this product is shipped as lyophilized powder to China customers.</i>
Purification:	Affinity Purified
Conjugation:	Unconjugated
Storage:	Store at -20°C as received.
Stability:	Stable for 12 months from date of receipt.
Predicted Protein Size:	39 kDa
Gene Name:	ELAV like neuron-specific RNA binding protein 2
Database Link:	<a href="#">NP_004423</a> <a href="#">Entrez Gene 1993 Human Q12926</a>
Background:	The protein encoded by this gene is a neural-specific RNA-binding protein that is known to bind to several 3' UTRs, including its own and also that of FOS and ID. The encoded protein may recognize a GAAA motif in the RNA. Three transcript variants encoding two different isoforms have been found for this gene.
Synonyms:	HEL-N1; HELN1; HUB

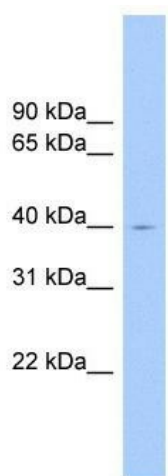


[View online »](#)

**Note:** Immunogen Sequence Homology: Dog: 100%; Pig: 100%; Rat: 100%; Horse: 100%; Human: 100%; Mouse: 100%; Bovine: 100%; Rabbit: 100%; Guinea pig: 100%

**Protein Families:** Transcription Factors

**Product images:**



WB Suggested Anti-ELAVL2 Antibody Titration:  
0.2-1 ug/ml; ELISA Titer: 1: 62500; Positive  
Control: Human brain