

Product datasheet for **TA345870**

TRBP (TARBP2) Rabbit Polyclonal Antibody

Product data:

Product Type:	Primary Antibodies
Applications:	WB
Recommended Dilution:	WB
Reactivity:	Human
Host:	Rabbit
Isotype:	IgG
Clonality:	Polyclonal
Immunogen:	The immunogen for anti-TARBP2 antibody: synthetic peptide directed towards the N terminal of human TARBP2. Synthetic peptide located within the following region: ANPGKTPISLLQEYGRIGKTPVYDLLKAEGQAHQPNFTFRVTVGDTSTCT
Formulation:	Liquid. Purified antibody supplied in 1x PBS buffer with 0.09% (w/v) sodium azide and 2% sucrose. <i>Note that this product is shipped as lyophilized powder to China customers.</i>
Purification:	Protein A purified
Conjugation:	Unconjugated
Storage:	Store at -20°C as received.
Stability:	Stable for 12 months from date of receipt.
Predicted Protein Size:	8 kDa
Gene Name:	TARBP2, RISC loading complex RNA binding subunit
Database Link:	NP_004169 Entrez Gene 6895 Human Q15633
Background:	HIV-1, the causative agent of acquired immunodeficiency syndrome (AIDS), contains an RNA genome that produces a chromosomally integrated DNA during the replicative cycle. Activation of HIV-1 gene expression by the transactivator Tat is dependent on an RNA regulatory element (TAR) located downstream of the transcription initiation site. TARBP2 binds between the bulge and the loop of the HIV-1 TAR RNA regulatory element and activates HIV-1 gene expression in synergy with the viral Tat protein.



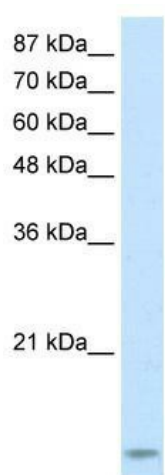
[View online »](#)

Synonyms: LOQS; TRBP; TRBP1; TRBP2

Note: Immunogen Sequence Homology: Dog: 100%; Pig: 100%; Rat: 100%; Horse: 100%; Human: 100%; Mouse: 100%; Bovine: 100%; Rabbit: 100%; Zebrafish: 100%; Guinea pig: 100%

Protein Families: Stem cell - Pluripotency

Product images:



WB Suggested Anti-TARBP2 Antibody Titration:
2.5 ug/ml; ELISA Titer: 1: 312500; Positive Control:
HepG2 cell lysate