

Product datasheet for **TA345869**

IREB2 Rabbit Polyclonal Antibody

Product data:

Product Type:	Primary Antibodies
Applications:	WB
Recommended Dilution:	WB
Reactivity:	Human, Mouse
Host:	Rabbit
Isotype:	IgG
Clonality:	Polyclonal
Immunogen:	The immunogen for anti-IREB2 antibody: synthetic peptide directed towards the middle region of human IREB2. Synthetic peptide located within the following region: IQINLNSIVPSVSGPKRPQDRVAVTDMKSDFQACLNEKVGFKGFQIAAEK
Formulation:	Liquid. Purified antibody supplied in 1x PBS buffer with 0.09% (w/v) sodium azide and 2% sucrose. <i>Note that this product is shipped as lyophilized powder to China customers.</i>
Purification:	Affinity Purified
Conjugation:	Unconjugated
Storage:	Store at -20°C as received.
Stability:	Stable for 12 months from date of receipt.
Predicted Protein Size:	105 kDa
Gene Name:	iron responsive element binding protein 2
Database Link:	NP_004127 Entrez Gene 64602 Mouse Entrez Gene 3658 Human P48200
Background:	IREB2 binds to iron-responsive elements (IRES), which are stem-loop structures found in the 5'-UTR of ferritin, and delta aminolevulinic acid synthase mRNAs, and in the 3' UTR of transferrin receptor mRNA. IREB2 binds to the IRE element in ferritin which results in the repression of its mRNA translation. Binding of the protein to the transferrin receptor mRNA inhibits the degradation of this otherwise rapidly degraded mRNA.
Synonyms:	ACO3; IRP2; IRP2AD

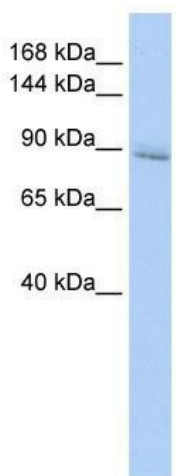


[View online »](#)

Note: Immunogen Sequence Homology: Dog: 100%; Pig: 100%; Rat: 100%; Horse: 100%; Human: 100%; Mouse: 93%; Rabbit: 93%; Zebrafish: 93%; Guinea pig: 93%

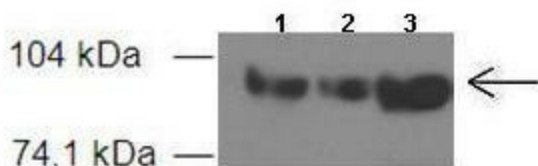
Protein Families: Druggable Genome

Product images:



IREB2

WB Suggested Anti-IREB2 Antibody Titration: 0.2-1 ug/ml; ELISA Titer: 1: 312500; Positive Control: Human Liver



Application: Western blotting; Species+tissue/cell type: Mouse liver extract; How many ug's of tissue/cell lysate run on the gel: 1. 60 ug mouse liver extract 2. 60 ug mouse liver extract 3. 60 ug mouse liver extract; Primary antibody dilution: 1: 500; Secondary antibody: Anti-rabbit HRP; Secondary antibody dilution: 1: 3000