

Product datasheet for **TA345868**

ASMT Rabbit Polyclonal Antibody

Product data:

Product Type:	Primary Antibodies
Applications:	WB
Recommended Dilution:	WB
Reactivity:	Human
Host:	Rabbit
Isotype:	IgG
Clonality:	Polyclonal
Immunogen:	The immunogen for Anti-ASMT antibody is: synthetic peptide directed towards the N-terminal region of Human ASMT. Synthetic peptide located within the following region: GSSSEDQAYRLLNDYANGFMVSQVLFAACELGVFDLLAEAPGPLDVAAVAA
Formulation:	Liquid. Purified antibody supplied in 1x PBS buffer with 0.09% (w/v) sodium azide and 2% sucrose. <i>Note that this product is shipped as lyophilized powder to China customers.</i>
Purification:	Affinity Purified
Conjugation:	Unconjugated
Storage:	Store at -20°C as received.
Stability:	Stable for 12 months from date of receipt.
Predicted Protein Size:	32 kDa
Gene Name:	acetylserotonin O-methyltransferase
Database Link:	NP_004034 Entrez Gene 438 Human P46597
Background:	This gene belongs to the methyltransferase superfamily, and is located in the pseudoautosomal region (PAR) at the end of the short arms of the X and Y chromosomes. The encoded enzyme catalyzes the final reaction in the synthesis of melatonin, and is abundant in the pineal gland. Alternatively spliced transcript variants have been noted for this gene.
Synonyms:	ASMTY; HIOMT; HIOMTY
Note:	Immunogen Sequence Homology: Human: 100%

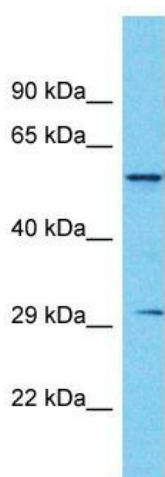


[View online »](#)

Protein Families: Druggable Genome

Protein Pathways: Metabolic pathways, Tryptophan metabolism

Product images:



Host: Rabbit
Target Name: ASMT
Sample Tissue: Fetal Kidney Lysate
Antibody Dilution: 1.0 μ g/ml

Host: Rabbit; Target Name: ASMT; Sample Tissue: Fetal Kidney lysates; Antibody Dilution: 1.0 ug/ml