

## Product datasheet for **TA345858**

### HCM (RNMT) Rabbit Polyclonal Antibody

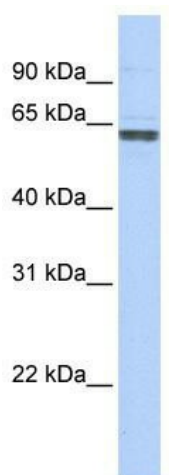
#### Product data:

Product Type:	Primary Antibodies
Applications:	WB
Recommended Dilution:	WB
Reactivity:	Human
Host:	Rabbit
Isotype:	IgG
Clonality:	Polyclonal
Immunogen:	The immunogen for anti-RNMT antibody: synthetic peptide directed towards the C terminal of human RNMT. Synthetic peptide located within the following region: RRLEASETESFGNEIYTVKFQKKGDYPLFGCKYDFNLEGVVDVPEFLVYF
Formulation:	Liquid. Purified antibody supplied in 1x PBS buffer with 0.09% (w/v) sodium azide and 2% sucrose. <i>Note that this product is shipped as lyophilized powder to China customers.</i>
Purification:	Affinity Purified
Conjugation:	Unconjugated
Storage:	Store at -20°C as received.
Stability:	Stable for 12 months from date of receipt.
Predicted Protein Size:	55 kDa
Gene Name:	RNA guanine-7 methyltransferase
Database Link:	<a href="#">NP_003790</a> <a href="#">Entrez Gene 8731 Human</a> <a href="#">O43148</a>
Background:	RNMT belongs to the mRNA cap methyltransferase family. RNMT is a mRNA-capping methyltransferase that methylates the N7 position of the added guanosine to the 5'-cap structure of mRNAs. It binds RNA containing 5'-terminal GpppC.
Synonyms:	cm1p; CMT1; CMT1c; hCMT1; hMet; MET; Met; RG7MT1
Note:	Immunogen Sequence Homology: Dog: 100%; Pig: 100%; Rat: 100%; Horse: 100%; Human: 100%; Mouse: 100%; Bovine: 100%; Guinea pig: 100%; Rabbit: 92%



[View online »](#)

## Product images:



WB Suggested Anti-RNMT Antibody Titration: 0.2-1 ug/ml; ELISA Titer: 1: 312500; Positive Control: NTERA2 cell lysate