

Product datasheet for **TA345857**

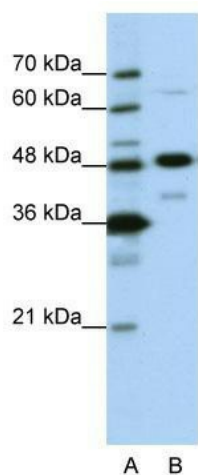
NOL4 Rabbit Polyclonal Antibody

Product data:

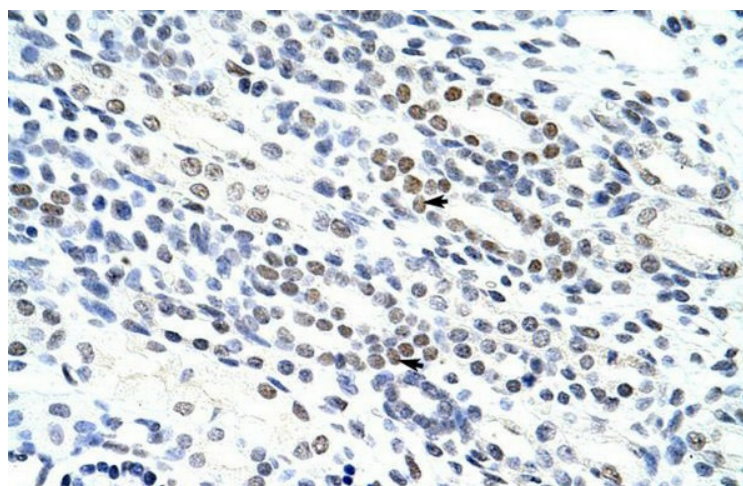
| | |
|--------------------------------|--|
| Product Type: | Primary Antibodies |
| Applications: | IHC, WB |
| Recommended Dilution: | WB, IHC |
| Reactivity: | Human |
| Host: | Rabbit |
| Isotype: | IgG |
| Clonality: | Polyclonal |
| Immunogen: | The immunogen for anti-NOL4 antibody: synthetic peptide directed towards the N terminal of human NOL4. Synthetic peptide located within the following region: SSNLEERMQSPQNLHGQQDDSSAAESFNGNETLGHSSIASGGTHSREMGD |
| Formulation: | Liquid. Purified antibody supplied in 1x PBS buffer with 0.09% (w/v) sodium azide and 2% sucrose. <i>Note that this product is shipped as lyophilized powder to China customers.</i> |
| Purification: | Affinity Purified |
| Conjugation: | Unconjugated |
| Storage: | Store at -20°C as received. |
| Stability: | Stable for 12 months from date of receipt. |
| Predicted Protein Size: | 46 kDa |
| Gene Name: | nucleolar protein 4 |
| Database Link: | NP_001185475 Entrez Gene 8715 Human O94818 |
| Background: | WNT9B is a member of the WNT family. They are secreted signaling proteins. These proteins have been implicated in oncogenesis and in several developmental processes, including regulation of cell fate and patterning during embryogenesis. |
| Synonyms: | CT125; HRIHFB2255; NOLP |
| Note: | Immunogen Sequence Homology: Human: 100%; Dog: 93%; Pig: 93%; Rat: 93%; Horse: 93%; Bovine: 93%; Rabbit: 93%; Guinea pig: 93%; Mouse: 86% |



[View online »](#)

Product images:

WB Suggested Anti-NOL4 Antibody Titration: 0.2-1 ug/ml; ELISA Titer: 1: 12500; Positive Control: HepG2 cell lysate



Rabbit Anti-NOL4 Antibody; Paraffin Embedded Tissue: Human Kidney; Cellular Data: Epithelial cells of renal tubule; Antibody Concentration: 4.0-8.0 ug/ml; Magnification: 400X