

Product datasheet for **TA345856**

SFRS9 (SRSF9) Rabbit Polyclonal Antibody

Product data:

Product Type:	Primary Antibodies
Applications:	WB
Recommended Dilution:	WB
Reactivity:	Human
Host:	Rabbit
Isotype:	IgG
Clonality:	Polyclonal
Immunogen:	The immunogen for anti-SFRS9 antibody: synthetic peptide directed towards the middle region of human SFRS9. Synthetic peptide located within the following region: VCYADVQKDGVMVEYLRKEDMEYALRKLDDTKFRSHEGETSYIRVYPER
Formulation:	Liquid. Purified antibody supplied in 1x PBS buffer with 0.09% (w/v) sodium azide and 2% sucrose. <i>Note that this product is shipped as lyophilized powder to China customers.</i>
Purification:	Affinity Purified
Conjugation:	Unconjugated
Storage:	Store at -20°C as received.
Stability:	Stable for 12 months from date of receipt.
Predicted Protein Size:	25 kDa
Gene Name:	serine/arginine-rich splicing factor 9
Database Link:	NP_003760 Entrez Gene 8683 Human Q13242
Background:	SFRS9 belongs to the splicing factor SR family. It contains 2 RRM (RNA recognition motif) domains. SFRS9 plays a role in constitutive splicing and can modulate the selection of alternative splice sites.
Synonyms:	SFRS9; SRp30c
Note:	Immunogen Sequence Homology: Dog: 100%; Pig: 100%; Rat: 100%; Horse: 100%; Human: 100%; Mouse: 100%; Rabbit: 100%; Guinea pig: 100%; Bovine: 93%; Zebrafish: 93%

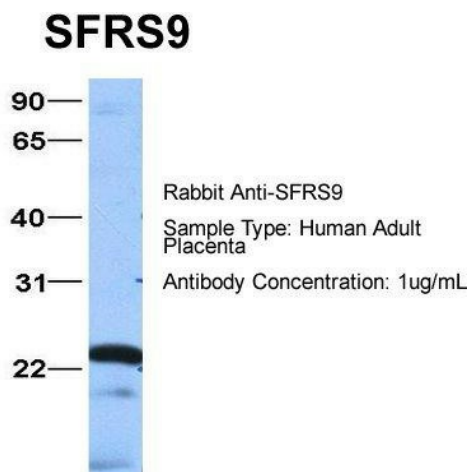


[View online »](#)

Protein Families: Druggable Genome

Protein Pathways: Spliceosome

Product images:



Host: Rabbit; Target Name: SFRS9; Sample Tissue: Human Adult Placenta; Antibody Dilution: 1.0 µg/ml